

# September 2025



## GENERAL MEETINGS WITH DEMOS/TALKS 2024 - 2025

Second Thursday  
of the Month

**MEETINGS WILL BE  
HELD VIA ZOOM**

Please join us at 6:00 p.m.  
(meeting will begin at 6:30 p.m.)

**Zoom Link will be e-mailed.**

**September 11**  
with: **Terry Denson**

**October 9**  
with: **Julie Gilbert Pollard**

**November 13**  
with: **Teresa Kirk**

**December 11**  
with: **Pat Lappin**

For up-to-date information about  
Palm Beach Watercolor Society  
[www.palmbeachwatercolorssociety.com](http://www.palmbeachwatercolorssociety.com)

"Like" Palm Beach Watercolor  
Society on Facebook

Visit PBWS virtual fb gallery ~  
[https://www.facebook.com/  
groups/pbwatercolor/?  
ref=pages\\_profile\\_groups\\_tab&  
source\\_id=121875457873375](https://www.facebook.com/groups/pbwatercolor/?ref=pages_profile_groups_tab&source_id=121875457873375)

contact Adrienne Walker  
[pbws2021@gmail.com](mailto:pbws2021@gmail.com)

# Palm Beach Watercolor Society

Dear Artist Friends,

***Time flies!* It is time to renew your membership as our new year begins on October 1st, 2025 and will take you through September 30, 2026.**

Membership affords you the opportunity to take part in our Monthly Meetings with Guest Artist Demos, twice monthly Paint-In's with Professional Models, Workshops in person and on Zoom, and Many Venues and Opportunities to Show Your Work.

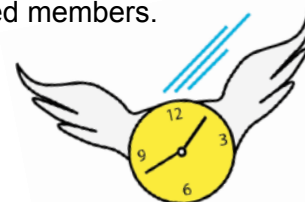
In addition, we are once again holding our annual luncheon which will be held on Wednesday, March 11th at the beautiful Benvenuto Restaurant in Delray Beach. At the luncheon you can socialize with other artist friends.

Take a moment now to renew! Renewing is really easy and can be done simply by going to our website [www.palmbeachwatercolorssociety.com](http://www.palmbeachwatercolorssociety.com) and clicking on MEMBERSHIPS. It only takes a minute and a credit card!

If you are a Lifetime member, please let us know if you have any changes in your contact information. We look forward to another great year with the Palm Beach Watercolor Society and all of its talented members.

All good wishes,

Carol Hirsch  
Membership Chair PBWS



To pay by check please find Membership Application and Renewal form near the end of this newsletter including the payment instructions which are also given below.



PALM BEACH WATERCOLOR SOCIETY

presents

**BRiC**  
BOCA RATON INNOVATION CAMPUS

*The Truth in Art*  
March 25, 2025 - March, 2026

IN COOPERATION WITH

**BRiC**

BOCA RATON INNOVATION CAMPUS

See the show during  
business hours:

Boca Raton Innovation Campus  
4950 Communications Ave.  
Boca Raton, FL 33431

## PAYMENTS BY CHECK:

**Membership Renewal and New Members paying by check:** Please download and fill out the form at the end of this newsletter. Send it in along with your check made payable to the **Palm Beach Watercolor Society, Inc.** to:

**Carol Hirsch**  
**3520 S.Ocean Blvd. Apt L 204**  
**Palm Beach, FL 33480**

**Paying for something else by check:** Note what you are paying for on the check. Make the check payable to the **Palm Beach Watercolor Society, Inc.** and mail to:

**PBWS c/o Jimmy Walker**  
**P.O. Box 18**  
**Smallwood, N.Y. 12778**

# Palm Beach Watercolor Society

## MEET OUR SEPTEMBER DEMO ARTIST

September 11, 2025, Member Meeting Via Zoom

### Terry Denson



#### Why I Enjoy Painting Sea Grapes

I have painted more than 150 images of sea grapes, varying in size from 5 x 7" to double elephant size, 26.5 x 40." Most were made during between 2003 and 2014 but I still paint several each year. To me they are a symbol of southern Florida and all sides of the Caribbean. They are extremely hardy and salt tolerant, often growing to just above the high tide line.

I enjoy painting them so much because the thick rounded leaves, spikes, and fruit clusters throw dramatic shadows on the large leaves. The leaves vary greatly in color throughout the year. The new spring leaves are a delicate reddish brown. Summer leaves are a range of green. But the autumn and winter leaves can be a bright red, mahogany, or deep burgundy. The grapes don't ripen all at once so a cluster can have green, yellow, pink, red and burgundy grapes at the same time. All of the colors, shapes, shadows plus the variety of leaf sizes can make an artist giddy. Top all of these features off with a light pink to deep red prominently raised veins and the reflective quality of the leaves and you can understand why they are enjoyable to paint. *\_Terry Denson*



*"A Touch of Ripe" by Terry Denson*



*"Spring Sea Grapes" Watercolor by Terry Denson*



*Sea Grape Photo*

**Biography** – Terry Denson's realistic paintings are known for their vibrant colors and dramatic contrast between color saturated subjects. Light, and its impact, are the real focus of her realistic watercolors and oils. She is known for painting tropical foliage, especially sea grapes, still life and Southwestern landscapes. Her watercolors include many produced on Ampersand Aquabond, a clay surfaced ground. She is a Saint Petersburg resident where she is a popular teacher and watercolor workshop instructor. She has displayed in numerous outdoor art festivals and exhibitions throughout the country. Her paintings have been used as promotional material by the Southern Watercolor Society, the Florida Watercolor Society, Florida Nursery Growers and Landscape Association, and several art festivals. Her paintings are in the collections of many corporations and public organizations.

She is a signature member of the Florida Watercolor Society, Kentucky Watercolor Society, and the Suncoast Watercolor Society and a member of the Women Artists of the West, the National Watercolor Society and The American Watercolor Society. She has been an Army officer, public affairs officer for a Texas state agency, an independent management consultant and training designer, and a full-time cruising sailor before becoming a full-time artist.

During 2020, the Covid year, she was president of the Florida Watercolor Society when FWS was one of the first art organizations to produce a virtual convention. In 2022 through early 2025 she and her husband traveled full-time throughout the United States in their RV. She is back at home in St. Petersburg teaching workshops and classes and producing paintings based on her travels and the occasional sea grape painting.

**REMINDER: We have video recordings of monthly meeting demos and workshops.** If you are a member, there is **no fee for the monthly meeting demo recordings.** The fee for guests is **\$25 for one meeting demo recording.**

If you **attended a workshop** and the workshop was recorded by PBWS with permission from the artist ~ and you would like a copy of the video recording the fee is **\$15 for 1 day, \$30 for 2 days, and \$45 for 3 days.**

If you **did not attend the workshop** the fee for the video recording is **\$75 for 1 day, \$150 for 2 days, and \$225 for 3 days.** The monies will go towards our scholarship fund.

# Palm Beach Watercolor Society

## Call to Member Artists



*PALM BEACH WATERCOLOR/MEDIA SOCIETY  
Invites Members to a Juried and Judged Art Show*

## **A BRUSH WITH ART**

**OCTOBER 19, 2025 - NOVEMBER 26, 2025**

*At the Adolph & Rose Levis Jewish Community Center  
21050 95th Avenue S, Boca Raton, FL 33428*

**Take-in: Thursday, October 16, from 10-11:30**

**Reception on Sunday, October 19, from 1-3:30**

**Pick-Up: Wednesday, November 26, from 10-11**

Eligibility: Artists may enter 2 pieces of art. Minimum size, framed or on canvas is **9 x 12**. Maximum size, framed or on canvas is 48 wide x 48. Canvas must be stapled on the back and not on the sides!

Entry Fee: \$35.

Entry Rules: Enter the exhibit through our website [www.palmbeachwatercolorssociety.com](http://www.palmbeachwatercolorssociety.com), click on "shows" and pay with your credit card. You will then need to email your jpegs to Lee Krull at [idesign@gate.net](mailto:idesign@gate.net). Please include your name in the email and the title of the painting above each jpeg.

Do not show any frame or mat in the image and ensure the image is correctly oriented, either horizontally or vertically. Paintings that are not correctly oriented and/or cropped will NOT be accepted in the show.

**Entries accepted thru October 7, 2025.**

**All artwork will be juried into the show. Artists will be notified of acceptance before the Take-In.**

Eligible Artwork: Watercolors, Acrylics, and water based Inks may be entered into the show.

Watermedia collage made by an artist's own artwork is acceptable but newspaper, magazine or other non-watermedia cutouts will NOT be accepted. Heavy graphite, oil pastels, foils, buttons, string are also NOT accepted. White tissue paper, rice paper, handmade paper and washi that has been painted over by the artist is acceptable. Oils, pastels, charcoal, drawings, photography, prints or giclees will be NOT be accepted. Images should be of your original art only, and not created under instruction or copied from another artist's work. Only your own, original photographs may be used for reference. Paintings that have been exhibited in prior PBWS shows are NOT eligible.

Framing Requirements: Paintings on paper must be glazed with plexiglass or varnished. Glass will not be accepted. Works on other surfaces, if not framed, must have wrapped edges, with no staples showing. All work must be wired firmly, taped and ready to hang. All entries must remain hanging for the duration of the show. **Artwork with carved or gilded frames or frames that are larger than 2" will not be accepted into the show.**

Please include the following information on the back of your painting:

Artist Name, Address, Phone, Email, Title of Painting, Media, Size and Price. Please tape ends of the wires in back of your painting.

Judge: To Be Announced!

Waiver of Liability: By submitting artwork into the exhibit, you agree to abide by all rules and regulations in this prospectus of the Palm Beach Watercolor Society. PBWS reserves the right to use artwork for publicity and promotion. PBWS is entitled to a 10% donation on the sale of any artwork during the exhibit.

**Quick Link to Register:** [https://swipesimple.com/links/lnk\\_4ca4a297d2cadec7729faeb31b864f92](https://swipesimple.com/links/lnk_4ca4a297d2cadec7729faeb31b864f92)

# 2-Day Workshop!

## Alexis Lavine

### *“Bridging Abstraction and Realism”*



**Thursday & Friday, 10 AM to Noon, and 1 to 3 PM**

**November 6th & 7th, 2025 via Zoom**

\$200. for Members    \$275. for Non-Members

**“In this workshop, I will be giving a LOT of instruction about interpreting our source photos in a creative and personal way, not just copying them. Using a source photo I will design and paint a realistic painting, and I will also use the SAME photo as the inspiration for an abstract painting, and show everyone how I do this.”**



Source photo

*Alexis knows that at the core, the heart, of every one of her realistic watercolors, is an abstract design. That design is the foundation of every painting, essential for its success. So - every one of her paintings, even if it looks realistic, is also abstract!*

*And then every so often, she creates a painting that is entirely abstract, with no identifiable imagery in it. This process is different from her realistic process, but as with realism, requires a strong foundation of design, along with intuitive decision making. Two very different ways of working, with two very different results!*



Realistic Watercolor from source photo

**It will be fascinating to learn how she uses lines, shapes, values, colors, and textures from one photo ... to create two very different paintings.**

### Biography

Alexis Lavine has been creating art all of her life. She earned a Masters Degree from Johns Hopkins University in its acclaimed *Art as Applied to Medicine* program. She worked as a medical illustrator for several years - and then found herself living in the beautiful, isolated mountains of western Maryland, too far away from a medical school or a medical publisher to practice her trade. So she picked up her brushes and her watercolors and started painting the magnificent landscape that surrounded her - and she hasn't looked back since.

She paints exclusively with watercolor, occasionally “en plein air,” but more frequently in her studio, where she constructs paintings which are thoughtfully designed, carefully drawn, and sensitively painted.

Alexis is an enthusiastic art instructor, who teaches painting and drawing classes and workshops. Since the pandemic, she has switched to zoom classes, and has discovered that she loves to teach online. Her students are from all over the United States, and overseas, and she enjoys the diversity which this provides. She loves to communicate about art, share her experience and knowledge, and help her students achieve greater artistic success.

Alexis has lived in Greensboro, North Carolina since 2002. Honored as “One to Watch” by Watercolor Artist Magazine, her paintings have been published in Splash, The Artistic Touch, The Best of Watercolor, and Watercolor Artist. **She is a signature member of the American Watercolor Society, National Watercolor Society, Watercolor Honor Society, Transparent Watercolor Society of America, Watercolor West, North East Watercolor Society, and Southern Watercolor Society.** Her work can be found in galleries in the mid-Atlantic and Southern states, and the U.S. Virgin Islands.



Abstract Watercolor from source photo

**Member** Quick Link to Sign Up: [https://swipesimple.com/links/lnk\\_2f474007dbaca2c9d948e7bff6736a69](https://swipesimple.com/links/lnk_2f474007dbaca2c9d948e7bff6736a69)

**Non-Member** Quick Link to Sign Up: [https://swipesimple.com/links/lnk\\_e34097be1d297dd1f35da01c54c0c0a9](https://swipesimple.com/links/lnk_e34097be1d297dd1f35da01c54c0c0a9)

\$100.00 deposit may be made on our website, under the Workshops tab.

Send checks to address on first page of this newsletter.

# Palm Beach Watercolor Society

presents

## In Person Workshop!

## Patricia Lappin "Painted Papers and Collage"



**Thursday & Friday, 10 AM to 3 PM  
January 16th & 17th, 2026**

**51 N. Swinton Ave, Old School Square,  
Delray Beach, FL.  
(parking garage is free)**

**\$200. for Members    \$275. for Non-Members**



Painted Papers

**This is a fun, creative experience exploring color, design, and composition.**

**This is a two-day workshop:**

**Day 1 for painting papers- direct painting and gel plate mono-printing.**

**Day 2 for composing abstract design with those papers in collages.**

Papers: Direct painting  
and gel plate mono-printing



Below: Finished Collages



**PAINTING PAPERS:** using simple, easy methods of putting acrylic paint on copy paper to create layers of pattern, color, and texture unique to each participant. We will use stencils, stamps, and masks and various tools to carve into the wet paint on the gel plate before printing, building up about 20 papers that work together. This will involve some color theory and creating different values of light and dark and midtone.

**COLLAGE:** composing abstract designs that feature the beautiful papers that we created in day 1. We will use matte-medium as a glue (or students' choice of alternate). Substrate can be watercolor paper, canvas, or canvas boards.

*Participants may want to bring their own paints, scissors, rulers, gel plate and rollers. I will have several gel plates and rollers for sharing, wet palettes, copy paper, tools for texture, paints for sharing, stencils, masks, and other materials for use with the mono-printing.*

*For collage, I will bring 9 x 12 tablet of 140 watercolor paper and canvas boards, matte-medium and paper plates for glue.*

### Biography

My current work is acrylic abstract, intuitive and reflecting my observations, experiences, and love of color. I also create painted papers using a gel plate mono-printing technique and then design abstract collages on paper and canvas.

I show my work in So. Fl. at juried shows, invitational shows, and my studio.

I moved to FL in 2016. In 2023 I received the Dina Baker Grant from the Cultural Council of Palm Beach County. This is a \$10,000 grant for mature female artist to help them support their art journey. It also included a show at the Palm Beach Cultural Council in Lake Worth in June 2-July 14, 2023.

I teach color and composition at the Armory Art Center in W. Palm Beach as a 6-week class on Monday mornings. I also have a once-a-month workshop there in Painted Papers/Collage.

The New Studio for Visual Arts in Jupiter host my Beyond the Brush class in abstract acrylic painting and Painted Papers with a gel plate.

My studio is with Zero Empty Spaces at the BRIC in Boca Raton with open studio nights on the first Thursday of every month. 4-7 pm.

I opened my first studio in Fairfield CT in 1980. I taught privately and at the Greenwich Art Society in Greenwich CT. I was an elected artist member of the Silvermine Guild of Artist in Wilton CT. I won many awards at juried shows though out New England and New York.

I moved to Ft Smith AR in 1996, taught at the Center for Art Education and the Ft Smith Art Center, now named the Ft Smith Regional Art Museum (RAM). I had many one person shows of my work at these organizations.

I also taught small groups weekly and workshops in the surrounding communities during the 20 years I resided in AR.

**Members** Quick Link to Sign Up: [https://swipesimple.com/links/lnk\\_5f14b132f6a2f63a892009c03bc313cf](https://swipesimple.com/links/lnk_5f14b132f6a2f63a892009c03bc313cf)

**Non-Members** Quick Link to Sign Up: [https://swipesimple.com/links/lnk\\_4302669adeef758058018c3e09f9e106](https://swipesimple.com/links/lnk_4302669adeef758058018c3e09f9e106)

\$100.00 deposit may be made on our website, under the Workshops tab. Send checks to address on first page of this newsletter.

**Palm Beach Watercolor Society**  
**MEMBER NEWS / ANNOUNCEMENTS**

**CALL TO OUR ARTISTS • UPCOMING SHOWS!**

**OCT. - NOV. 2025 (2 month show) JURIED & JUDGED SHOW - "A Brush With Art"**  
**NOW ACCEPTING ENTRIES • Prospectus on previous page**

**Adolf and Rose Levis JCC**  
21050 95th Street, Boca Raton  
**Take in: October 16**  
**Reception: October 19**  
**Take down: November 26**

**NOV. - 2025 (1 month show) Coral Spring's Museum**  
Coral Springs  
**Take in: October 31**  
**Reception: November 6**  
**Take down: November 29**

**JAN. - MAR. 2026 (3 month show)**  
**Crest Theatre at Old School Square**  
Delray Beach

**MAR. - APR. 2026 (2 month show)**  
**Arts Warehouse**  
Delray Beach

**MAR. 2026 - MAR. 2027 (Annual Show)**  
**BRiC (Boca Raton Innovation Center)**  
Boca Raton

The Prospectus for each show will be sent out 6 weeks before the take in dates for the shows to let you know the dates by which you need to get your paintings ready.

Please read the Prospectus for each individual show carefully, as the information/rules may vary depending upon the venue.

**UPCOMING THIS FALL... A PBWS BOOK CLUB!**

**Do you like reading books about art and artists and discussing them with other art enthusiasts?**

We're thinking you do, so this fall we are going to pilot this idea for the PBWS. We hope to begin meeting in November, with meetings taking place every other month --possibly on a Sunday afternoon and probably rotating among our PBC library locations. Most of our selections will be novels or historical novels, but the group will shape the choices. If this is an activity you think you'd be interested in participating in, let us know and share any thoughts you may have about the idea by contacting Mary Martinéz ([artsymary@gmail.com](mailto:artsymary@gmail.com)), Bobbin Salisbury ([Bobbinsart@gmail.com](mailto:Bobbinsart@gmail.com)) or Caryn Kabat ([carynkabat47@gmail.com](mailto:carynkabat47@gmail.com)).

Members! Share your news with us. Send an email with a photo if you wish to include one to [idesign@gate.net](mailto:idesign@gate.net) with the subject "PBWS Member News".

**Art and Frame Galerie**  
2300 N. Dixie Hwy.  
Boca Raton, Florida 33431  
561-362-5450  
Todd Skrecz

**20% discount on custom framing**  
**for Palm Beach Watercolor Society**  
**members**

*Member News & Announcements continued ...*

## LET'S MAKE IT BETTER THAN EVER -- THE PBWS LUNCHEON 2026 WANTS YOU!

As we slog through the summer heat and humidity, the spring of 2026 may seem like a long time away, but work will begin in just a few months for next year's **annual PBWS Luncheon**. This gala event will be held **Wednesday, March 11, 2026** (mark your calendars now!), at the beautiful Benvenuto Restaurant in Delray Beach. All of the proceeds from our silent auction and raffle sales go to fund local art education and scholarships. This year, we helped 14 schools with the purchase of art materials and provided scholarships for high school seniors on their way to careers in artistic fields.

The response from volunteers this year was just wonderful, and we hope even more of our members will become involved for 2026 and share in the fun of working together to make 2026 a great event.

If you would like to contribute, here are some ways you can help:

- **Work on our theme, decorations, and giveaways.** Here's a chance for your creativity to shine!
- **Help to solicit raffle prizes** from stores, restaurants or other venues, such as theaters, museums, etc. We will begin this important task in September.
- **Donate a painting for the silent auction.** Your art can earn money for our worthy causes!
- **Help in tracking and organizing raffle and silent auction donations.**
- **Donate an item for the raffle.** Many of our members find they have art materials or other items that they have accumulated and never used – new items can be donated to be used for raffle prizes.
- **Assist with organizing our fashion show.** This part of the program always adds to the fun! We will need a small committee to work with the vendor for 2026.
- **Help set up the silent auction, registration and raffle sales; sell raffle tickets or assist in other ways on the day of the luncheon.** Lots of tasks require assistance when we arrive at our venue and extra hands are always welcomed!

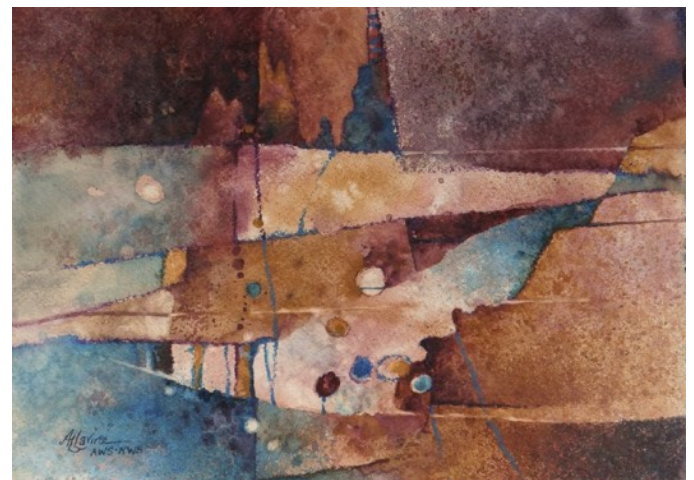
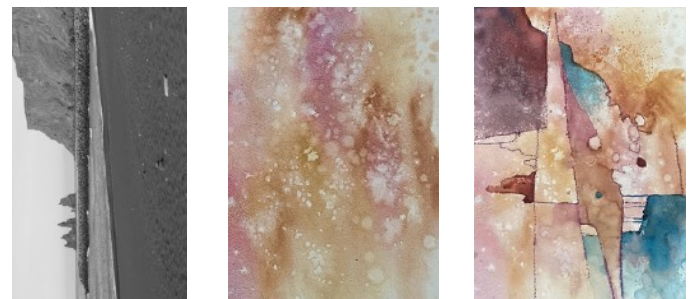
If you would like to work on the 2026 Luncheon, please contact **Mary Martinéz** (Email: [artsymary@gmail.com](mailto:artsymary@gmail.com); phone: 561-704-0902) and let her know how you would like to support the luncheon effort. She will be sure you are on the list to receive the notice of the first organizational meeting this fall. Thank you!

## FOLLOW UP FROM ALEXIS LAVINE'S DEMO!

"It was a pleasure to zoom with you on Thursday evening, and I hope you found my discussion and my demos to be interesting and helpful. Due to the brief amount of time onscreen, neither one was anywhere near finished when we wrapped up! I have finished both demos now, and want to share them with you." \_ Alexis Lavine



L to R: Source photo; Work in progress during demo; Finished painting  
Rotated source photo; Pre-painted background; Work in progress; Finished painting



## Palm Beach Watercolor Society

# VIRTUAL PAINT-INS with PROFESSIONAL MODELS

PBWS will have virtual Paint-Ins with live professional models via Zoom on the 2nd and 4th Tuesday of the month in the morning from 10:00 A.M. to 12:45 P.M.

**Members Only - Six Sessions \$30.00**

**Non-members - Four Sessions \$40.00**

"All Paint-In sessions must be used within 6 months of payment date. Any unused sessions after the 6-month cutoff will be donated to PBWS. **You will get a monthly reminder of how many sessions you have remaining from Liane Kravet.**" For example: If you pay \$30 for 6 sessions on January 1, 2024 and miss any you will have until July 1, 2024 to make them up. We thank you for your understanding and look forward to seeing you at the Paint-Ins.

<b>Tuesday August 26</b>	<b>- Joe Rosing</b>
<b>Tuesday September 9</b>	<b>- Nica Sweet</b>
<b>Tuesday September 23</b>	<b>- Edwin Vazquez</b>
<b>Tuesday October 14</b>	<b>- Sarah Misch</b>
<b>Tuesday October 28</b>	<b>- Matt Knife</b>

Below is the general format for the paint-in which is open to change based on input from attendees:

3 - 5 two minute poses (warm up)  
2 five minute poses  
2 ten minute poses  
several 20 minute poses to allow you time to paint

**It is not necessary to download Zoom** on your computer, phone or tablet. All you need to do is **click on the link in the invite letter that will be sent out a day prior to the paint-in.**

**To pay by credit card:** Go to the Paint-Ins Page at [www.palmbeachwatercolorsociety.com](http://www.palmbeachwatercolorsociety.com)

**To pay by check:** Please mail your checks made payable to **Palm Beach Watercolor Society, Inc.** and send to:

**PBWS % Jimmy Walker  
P.O. Box 18  
Smallwood, N.Y. 12778**

Call **Mary Martinez (561) 704-0902** or **(561) 736-7619** for more information or email **Adrienne Walker [pbws2021@gmail.com](mailto:pbws2021@gmail.com)**.

### ZOOM ETIQUETTE

- 1. Be "camera" ready and on time**, and please be seated. We do not need to be taken for a spin throughout your home until you get settled. If you need to relocate during the meeting you can turn off your video.
- 2. Please note: before you turn on the your "video" picture ~ we hear you! Your audio is live.** You have the option to mute yourself once you join us.
- 3. Wear pants and shirts.** If you are not alone, please let it be known to others that we can see and hear them too 😊
- 4. Mute yourself once the demo begins** or we will mute you if you aren't muted. If you have a question or comment **please type your question(s) in the "chat" section.** The host or co-host will ask your question(s) when the moment is right.
- 5. Be polite.** Communicating to a large audience while demonstrating one's painting techniques can't be easy. Please show some respect and compassion.

Custom Picture Framing  
• Original Limited Edition Graphics • Posters • Prints

**Naked Wall** 10% OFF PBWS  
**ART GALLERIES**

Palm Square Plaza  
1217 S. Powerline Rd.  
Pompano Beach, FL 33069  
(954) 971-6710

Shoppes of Oriole  
7431-57 W. Atlantic Ave.  
Delray Beach, FL 33446  
(561) 498-7773



# PALM BEACH WATERCOLOR SOCIETY

## Membership Application and Renewal Form

**\*\*\*ATTENTION, PLEASE READ CAREFULLY\*\*\***

Membership payment includes eligibility to participate in, shows, workshops, paint-in's, committees, and to serve on the PBWS Board. **Please answer YES in the appropriate box; Membership Renewal if you are a returning member OR New Membership if you are joining for the first time.** Annual dues are in effect from October 1st to September 30th.

Please complete the information below and submit this form with your payment.

Make check payable to: **Palm Beach Watercolor Society, Inc.**

**Carol Hirsch  
3520 S.Ocean Blvd. Apt L 204  
Palm Beach, FL 33480**

**Dues: Single Membership \$50.00 \_\_\_\_ Family Membership \$65.00 \_\_\_\_ Lifetime \$275.00 \_\_\_\_**

The PBWS Newsletter is normally sent by e-mail. Annual charge for mailed Newsletter: \$10.00 \_\_\_\_

**New Member** ☐

**I am Renewing my Membership** ☐

☐ Change of Address ☐ Change of Phone ☐ Change of E-mail ☐

Name (Please Print): \_\_\_\_\_ Date: \_\_\_\_\_

Address: \_\_\_\_\_

City: \_\_\_\_\_ State: \_\_\_\_\_ Zip code: \_\_\_\_\_

Telephone: (home) \_\_\_\_\_ (cell) \_\_\_\_\_

E-MAIL: \_\_\_\_\_ Website: \_\_\_\_\_

PBWS operates on the basis of volunteers. Our members are encouraged to assist with various activities as well as serve on or chair committees.

I would like to help with (please check):

Communications ☐ Computer ☐ Exhibitions ☐ Historian ☐ Hospitality ☐ Mailings ☐

Membership ☐ Newsletter ☐ Paint-In's ☐ Programs ☐ Publicity ☐ Receptions ☐

Workshops ☐ PBWS Board ☐ Other \_\_\_\_\_

**Total Payment: \$ \_\_\_\_\_ Check # \_\_\_\_\_**

**\*Credit card payments [www.palmbeachwatercolorsociety.com](http://www.palmbeachwatercolorsociety.com); go to Membership**  
**If you have any problems paying with credit card, please call Adrienne Walker 516-885-4199.**

For further membership information, contact:

Carol Hirsch (646) 625-9785 or Lee Krull C (561)-767-6226 H (561)-357-4627

## Palm Beach Watercolor Society Board Members

Adrienne Walker <a href="mailto:pbws2021@gmail.com">pbws2021@gmail.com</a>	President / Workshop Director	(516) 885-4199 c
Bobbin Salisbury <a href="mailto:bobbinsart@gmail.com">bobbinsart@gmail.com</a>	Vice President	(561) 762-8654 c
Jimmy Walker <a href="mailto:walkertrvl@aol.com">walkertrvl@aol.com</a>	Treasurer	(561) 885-4199 c
Anita Lovitt <a href="mailto:lovittland@gmail.com">lovittland@gmail.com</a>	Recording Secretary/Paint Ins	(561) 706-3653 c
Beverly Granath <a href="mailto:bgranath@bellsouth.net">bgranath@bellsouth.net</a>	Corresponding Secretary	(561) 395-5937 c (561) 395-4416 h
Caryn Kabat <a href="mailto:carkab@aol.com">carkab@aol.com</a>	Education	(561) 523-9655 c (561) 733-0195 h
Karen H. Salup <a href="mailto:karensalup@gmail.com">karensalup@gmail.com</a>	Scholarships	(561) 715-2758 c
Carol Hirsch <a href="mailto:caroljhirsch@gmail.com">caroljhirsch@gmail.com</a>	Membership Chair	(646) 625-9785 c
Lee Krull <a href="mailto:idesign@gate.net">idesign@gate.net</a>	Newsletter/Membership	(561) 767-6226 c (561) 357-4627 h
Susan Pecker <a href="mailto:wuzcold@aol.com">wuzcold@aol.com</a>	Workshops	(561) 445-3440 c (561) 738-0170 h
Paula Epstein <a href="mailto:paintingwpaula@bellsouth.net">paintingwpaula@bellsouth.net</a>	Workshops	(561) 455-6049 c (561) 499-0304 h
Karen Thornton <a href="mailto:karenthornton860@gmail.com">karenthornton860@gmail.com</a>	Workshops	(561) 789-2664 c

## Palm Beach Watercolor Society Committee Members

Camille Rosano <a href="mailto:newcr13@aol.com">newcr13@aol.com</a>	Shows Chair	(914) 260-8690 c
Sonja Shuford <a href="mailto:sonja5880@gmail.com">sonja5880@gmail.com</a>	Committee Member	(561) 344-9174 c
Marilyn Young <a href="mailto:marilynyoungartwork@gmail.com">marilynyoungartwork@gmail.com</a>	Committee Member	(954) 461-8057 c
Mary Martinez <a href="mailto:artsymary@gmail.com">artsymary@gmail.com</a>	Paint-Ins	(561) 704-0902 c (561) 736-7619 h
Lynn Holland <a href="mailto:laplume366@gmail.com">laplume366@gmail.com</a>	Contributing Member	(561) 638-9927 h
Carol Z. Brody <a href="mailto:czbrody@carolzbrody.com">czbrody@carolzbrody.com</a>	Contributing Member	
Beverly Walzer <a href="mailto:bevwalz007@gmail.com">bevwalz007@gmail.com</a>	Paint-Ins	(561) 866-8666 c
Liane Kravet <a href="mailto:kravet.4210@gmail.com">kravet.4210@gmail.com</a>	Paint-Ins	(954) 249-9494 c