

January 2025



**GENERAL MEETINGS  
WITH DEMOS/TALKS  
2024 - 2025**

**Second Thursday  
of the Month**

**MEETINGS WILL BE  
HELD VIA ZOOM**

Please join us at 6:00 p.m.  
(meeting will begin at 6:30 p.m.)  
**Zoom Link will be e-mailed.**

**January 9  
with: Don Andrews**

**February 13  
with: Pam Wenger**

**March 13  
with: Jordan M. Rhodes**

**April 10  
with: Carrie Waller**

**May 8  
with: Stan Kurth**

For up-to-date information about  
Palm Beach Watercolor Society  
[www.palmbeachwatercolorssociety.com](http://www.palmbeachwatercolorssociety.com)

"Like" Palm Beach Watercolor  
Society on Facebook

Visit PBWS virtual fb gallery ~  
[https://www.facebook.com/  
groups/pbwatercolor/?  
ref=pages\\_profile\\_groups\\_tab&  
source\\_id=121875457873375](https://www.facebook.com/groups/pbwatercolor/?ref=pages_profile_groups_tab&source_id=121875457873375)

contact Adrienne Walker  
[pbws2021@gmail.com](mailto:pbws2021@gmail.com)

**Palm Beach Watercolor Society**

Dear Members,

Wishing you and your family a year  
filled with peace and health.

As I reflect on the year that was, I  
feel so blessed to be part of this very  
creative group of artists.

*Happy  
New Year!*

Palm Beach Watercolor Society had a very good year. We donated over \$300. worth of art supplies to each of 12 schools in Palm Beach County, and gave \$500. to Special Needs Arts. Our scholarship program awarded scholarships to three graduating seniors who are pursuing a higher education in the Arts. I feel that this coming year we can even do more to support the Arts in our community. You can help by volunteering and joining us in all that we do.

Our Paint-Ins with a professional model is one of the best opportunities for you to gain more skill in drawing and painting, along with our demos and workshops. We currently have three workshops for you to choose from with very fine artists teaching them.

Join us in showing your work at our Exhibits. All of our members are fine artists. Whether you are a beginner, intermediate, advanced or professional it is important to show your work. We learn from each other and support each other. Come to the receptions for the shows and see what your fellow artists are showing. Bring your family and friends! These receptions are a great way to meet other artists and socialize. If you are teaching take your students to see our Exhibits. They will enjoy the experience. Save the date and join us at our annual luncheon on March 12th!

Art is Love. We love to create.  
Happy Painting,

Adrienne Walker, President PBWS  
[pbws2021@gmail.com](mailto:pbws2021@gmail.com)

**PAYMENTS BY CHECK:**

**Membership Renewal and New Members paying by check:** Please download and fill out the form at the end of this newsletter. Send it in along with your check made payable to the Palm Beach Watercolor Society to:

**PBWS c/o Carol Hirsch  
3520 S.Ocean Blvd. Apt L 204  
Palm Beach, FL 33480**

**Paying for something else by check:** Note what you are paying for on the check. Make the check payable to the Palm Beach Watercolor Society and mail to:

**PBWS c/o Jimmy Walker  
6442 Emerald Breeze Way  
Boynton Beach, FL 33437**

# Palm Beach Watercolor Society

## CALL TO OUR MEMBER ARTISTS



PALM BEACH WATERCOLOR SOCIETY  
accepting Watercolor and Acrylic Paintings  
Invites Members to a Judged Art Show

### **The Art in Me**

January 22 - March 5, 2025  
At the Crest Theatre at Old School Square  
51 N. Swinton Avenue, Delray, FL 33444

**Take-in:** Wednesday, January 22, 9:30-11:00  
**Pick-Up:** Thursday, March 6, 9:30-10:30  
**Reception:** Wednesday, January 29th 3:00 - 4:30

**Eligibility:** Artists may enter 2 pieces of art. Minimum size, framed or on canvas is 11 x 14. Maximum size, framed or on canvas is 30 wide x 40 high. **We will accept the first 40 paintings.**

**Entry Fee:** \$35

**Entry Rules:** Enter the exhibit through our website [www.palmbeachwatercolorsociety.com](http://www.palmbeachwatercolorsociety.com), click on "shows" and pay with your credit card. You will then need to email your jpegs to Lee Krull at [idesign@gate.net](mailto:idesign@gate.net). Please include your name in the email and the title of the painting above each jpeg. Please send the ACTUAL Jpeg file, NOT an archived file from another source. If possible, please save your jpegs with your name and the name of the painting in the jpeg file name. Do not show any frame or mat in the image and ensure the image is correctly oriented, either horizontally or vertically. Paintings that are not correctly oriented and/or cropped will NOT be accepted in the show. **Entries will be accepted thru Sunday, January 19 .**

**Eligible Artwork:** Watercolors and water based Inks may be entered into the show. Watercolor collage made by an artist's own artwork is acceptable but newspaper, magazine or other non-watercolor cutouts will NOT be accepted. Heavy graphite, oil pastels, foils, buttons, string are also NOT accepted. White tissue paper, rice paper, handmade paper and washi that has been painted over by the artist is acceptable. Oils, pastels, charcoal, drawings, photography, prints or giclees will NOT be accepted. Images should be of your original art only, and not created under instruction or copied from another artist's work. Only your own, original photographs may be used for reference. Paintings that have been exhibited in prior PBWS shows are NOT eligible.

**Framing Requirements:** Paintings on paper must be glazed with plexiglass or varnished. Glass will not be accepted. Works on other surfaces, if not framed, must have wrapped edges, with no staples showing. All work must be wired firmly, taped and ready to hang. All entries must remain hanging for the duration of the show.

**Please include the following information on the back of your painting:**  
Artist Name, Address, Phone, Email, Title of Painting, Media, Size and Price.

**Judge:** This show will be judged by Gina Carter the Director of the Crest Theatre.

**Waiver of Liability:** By submitting artwork into the exhibit, you agree to abide by all rules and regulations in this prospectus of the Palm Beach Watercolor Society. PBWS reserves the right to use artwork for publicity and promotion. PBWS is entitled to a 10% donation on the sale of any artwork during the exhibit.

Quick link to enter the show: [https://swipesimple.com/links/lnk\\_f785339899b4a1029455eb2915470d16](https://swipesimple.com/links/lnk_f785339899b4a1029455eb2915470d16)

# Palm Beach Watercolor Society

## CALL TO OUR MEMBER ARTISTS



*PALM BEACH WATERCOLOR SOCIETY  
Invites Members to a Judged Art Show  
ACRYLICS AND WATERCOLOR ACCEPTED*

### **MY WORLD IN COLOR**

*At The Coral Springs Museum of Art  
2855 Coral Springs Drive, Coral Springs, FL 33065*

**Take-in:** Friday, January 31, from 9:30-11:00

**Pick-Up:** Friday, February 28, from 9:30-11:00

**Reception:** Tuesday February, 11th from 5 - 6:30 pm

Eligibility: Artists may enter 2 pieces of art. either watercolor acrylics or mixed media Minimum size, framed or on canvas is **16 x 20**. Maximum size: framed or on canvas is **48 wide x 60 high**. Canvas must be stapled on back and not on the sides!

Entry Fee: \$35

Entry Rules: Enter the exhibit through our website [www.palmbeachwatercolorssociety.com](http://www.palmbeachwatercolorssociety.com), click on "shows" and pay with your credit card. You will then need to email your jpeg to Lee Krull at [idesign@gate.net](mailto:idesign@gate.net). Please include your name in the email and the title of the painting above the jpeg.

Do not show any frame or mat in the image and ensure the image is correctly oriented, either horizontally or vertically. Paintings that are not correctly oriented and/or cropped will NOT be accepted in the show.

**Entries will be accepted thru JANUARY 26.**

Eligible Artwork: Watercolors, Acrylics, and water based Inks may be entered into the show.

Water media collage made by an artist's own artwork is acceptable but newspaper, magazine or other non-watermedia cutouts will NOT be accepted. Heavy graphite, oil pastels, foils, buttons, strings are also NOT accepted. White tissue paper, rice paper, handmade paper and washi that has been painted over by the artist is acceptable. Oils, pastels, charcoal, drawings, photography, prints or giclees will be NOT be accepted. Images should be of your original art only, and not created under instruction or copied from another artist's work. Only your own, original photographs may be used for reference. Paintings that have been exhibited in prior PBWS shows are NOT eligible.

Framing Requirements: Paintings on paper must be glazed with plexiglass or varnished. Glass will not be accepted. Works on other surfaces, if not framed, must have wrapped edges, with no staples showing. All work must be wired firmly, taped and ready to hang. All entries must remain hanging for the duration of the show.

Please include the following information on the back of your painting:

Artist Name, Address, Phone, Email, Title of Painting, Media, Size and Price.

Judge: We are pleased to announce that Jan Guarino will be our judge for this show. As a teacher, Jan loves to share painting techniques, theories and joy with all her students. Jan graduated the Fashion Institute of Technology and has been a graphic artist designing marketing materials for 45 years. She has taught at various art leagues throughout the country and internationally on zoom. She exhibits at various galleries and is a permanent artist at the Firefly Gallery in NY.

Waiver of Liability: By submitting artwork into the exhibit, you agree to abide by all rules and regulations in this prospectus of the Palm Beach Watercolor Society. PBWS reserves the right to use artwork for publicity and promotion. PBWS is entitled to a 10% donation on the sale of any artwork during the exhibit.

Quick Link to enter the show: [https://swipesimple.com/links/lnk\\_7c025fbc8030829ff4ccb3d37bb080bb](https://swipesimple.com/links/lnk_7c025fbc8030829ff4ccb3d37bb080bb)

# Palm Beach Watercolor Society

## MEET OUR JANUARY DEMO ARTIST

JANUARY 9th 2025, Member Meeting Via Zoom

### Don Andrews

BIOGRAPHY OF  
DON ANDREWS aws

[www.donandrewsstudio.com](http://www.donandrewsstudio.com)



Don Andrews is a nationally known watercolor artist and workshop instructor. He is a graduate of Ringling School of Art in Sarasota, Florida and a resident of Bastrop, Texas.

Don is an active member and past board director of the American Watercolor Society. His paintings have received numerous awards in national watercolor competitions, including three awards from the American Watercolor Society.

Don has conducted painting workshops throughout the United States, and Europe for over 35 years.

He is the author of three books, and twelve videos on painting in watercolor and is featured in the Watson Guptill publication "Everything You Ever Wanted to Know about Watercolor" and has had numerous feature articles published in the Watercolor issue of American Artist Magazine.



---

**REMINDER: We have video recordings of monthly meeting demos and workshops.** If you are a member, there is **no fee for the monthly meeting demo recordings**. The fee for guests is \$25 for one meeting demo recording.

If you **attended a workshop** and the workshop was recorded by PBWS with permission from the artist ~ and you would like a copy of the video recording the fee is **\$15 for 1 day, \$30 for 2 days, and \$45 for 3 days**.

If you **did not attend the workshop** the fee for the video recording is **\$75 for 1 day, \$150 for 2 days, and \$225 for 3 days**. The monies will go towards our scholarship fund.



# CONGRATULATIONS!



## “Life Is Art” Show Awards

Parkland, Florida

Judge: Isabel Gouveia

**1st Prize:**  
*Sunset On The  
Back Shore*  
**Pauline Runkle**



An explosion of brushstrokes defines and makes visible the light of the end of the day somewhere in the distance. These beautiful brushstrokes contrast with the reflections of the water and its rocks, where the precise ones and some more freely executed to reveal a poetic form of the coastline at sunset.

**2nd Prize:**  
*Caribbean  
Carver*  
**Lee Krull**



The subject of this artwork has a natural spirit, complemented by the artist's watercolor technique and lightness – a mastery of the method that defines the theme of the composition with its simplicity to portray the day of a craftsman.

**3rd Prize:**  
*St. Remy Du  
Provence*  
**Ann Piekarz**



This composition uses greens and more greens, freezing a moment rich in textures. Leaves, light, and light wind vibrate and add to the texture of the painting, fixed in a moment for our contemplation.

**Honorable  
Mention:**  
*Light Of The  
Morning*  
**Mac Johnson**



Like a moment of hope for the future, the day is illuminated by a tree branch that sprouts from this dense garden, making the buds of a new plant visible.

**Honorable  
Mention:**  
*Morning Light*  
**Jeanne Landau**



When I saw this piece it was untitled. It is like an intimate and routine domestic scene revealed through a window, examine a poetic nocturnal atmosphere. The dense application of colors reinforces this atmosphere.

**Judges Choice:**  
*Loc En Season  
D'Automme*  
**Bobbin Salisbury**



The masterful superimposition of transparencies invokes different themes of interest to the observer, who can delve into these layers of color that softly suggests a coastline on the horizon, a mountain range, or an abstract composition where color transparency dominates with its lightness.

---

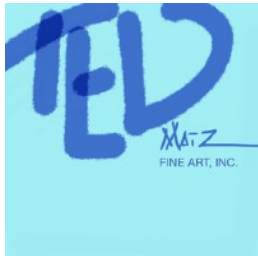
*“It was an honor and a pleasure to be a judge, allowing me to view the many works of some of the members, who present various styles and motifs painted in watercolor. They are all technically gifted and produce excellent work, which made it difficult for me to choose them for this award. I congratulate the artists for their desire for this artistic expression and for achieving excellent results with this sensitive medium. Because of this diversity of creative expression, I committed to looking at them as a spectator to express my feelings and emotions in front of these works.” – Isabel Gouveia*

# Palm Beach Watercolor Society

## TWO DAY WORKSHOP

### Loosen up your painting style!!!

# Fundamentals of Abstract Painting with TED MATZ



JANUARY 13th & 14th, 2025

9:30 - 3:30

at JCC Boynton Beach

8500 S. Jog Road

Members \$250.00 Non-Members \$300.00



"Between Here and There"

You will learn simple techniques that will help loosen up your paintings regardless of your current style.

This course will help you to improve on studio practices, discover new methods of mark making and learn an approach that will make your work more creative.

Open to all levels of experience.



"Above the White Moon"

*"I personally believe that creativity is not an inherited skill that is passed on genetically but is something that can be learned by changing old perceptions and habits. Everyone is creative. You just must find out where your creative bent leads you," Ted Matz*

### WORKSHOP SUPPLY LIST:

#### ACRYLIC PAINT COLORS:

The colors I consider essential are...Yellow Ochre, Cadmium Yellow, Cadmium Red, Alizarin Crimson, Burnt Sienna, Cobalt Blue, Ultramarine Blue and Raw Umber. You may use any other paint colors that you already have and feel free to use them.

#### SUBSTRATES:

**DO NOT BRING STRETCHED CANVAS OR CANVAS PANELS. All studies will be done on paper.**

Bristol Paper is what will be used to paint and sketch on and will be the substrate for all work produced. The recommended size is 18 x 24 and no smaller than 11"x14" and have a "smooth or vellum surface.

#### BRUSHES/MARK MAKING MATERIALS:

Bring a variety of brushes, preferable old brushes that are no longer valued and any instrument that you can find that will

help to make a mark on your painting. Any household tool that will help to make a texture or make unusual marks with the paint can be used. We will be using any tool or instrument that can make a mark or be used to scrape the surface of the paper to make a variety of textures.

Other suggested supplies are conte crayon in black, red and white, India ink (waterproof), graphite sticks, soft lead pencils, charcoal pencils, vine charcoal, palette knives in various shapes (if you have some). Exacto knife and razor blades, metal ruler (plastic and wood will also do).

#### MISCELLANEOUS ITEMS

A roll of blue painter's tape 1" wide. Large container for water, paper towels, paper palette or some form of palette to work on.

**It is important that you have paper, paint and brushes ready for the first session.**

#### REGISTER & PAY ONLINE:

Payment in Full or a \$100.00 Deposit can be made on the website

[www.palmbeachwatercolorsociety.com](http://www.palmbeachwatercolorsociety.com)

under Workshops.

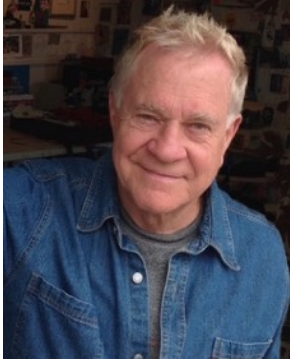
or

**PAY BY CHECK: Make the check out to PBWS and mail to:**

**PBWS c/o Jimmy Walker, PBWS c/o Jimmy Walker, 6442 Emerald Breeze Way, Boynton Beach, FL 33437**



Palm Beach Watercolor Society  
**TWO DAY WORKSHOP**



# Bob Burridge

**Painting Loose Florals & Landscapes**  
**Two Days of Intense Fun!**  
*Via Zoom*

**February 19th and 20th, 2025**

**11:00 am - 1:00 pm - lunch break - 2:00 pm to 4:00 pm**

## **Abstract Florals from Loose, Colorful Splatters**

Paint modern, loose abstract florals that sell like crazy. Learn the secrets of Monet and others as you turn those colorful splashes into quick little gems. These Burridge “daily warmups.” Playing with wild colors, you will paint loose starts into little beauties.

You will learn how to make a vase of abstract flowers from a mess, using reductive painting techniques. We will work with different vase shapes, styles and learn how to paint stems and water!



## **Loose Abstract Landscapes**

Paint with free rein and learn to run wild with looser landscape painting. Learn quick spontaneity with your imagination for maximum effect! Paint warm-up exercises using Bob’s four favorite basic compositions: Horizontal, Tunnel, Asymmetrical and Golden Section.

We will work with black and white acrylic paint to learn structure and value. Then switch to color, using both transparent and opaque acrylics.



***If you are looking for more fun, this is for you! Burridge’s positive, fearless and supportive approach inspires everyone to paint with endless possibilities.***

***Burridge will provide many demos, critiques, and painting time. This workshop is appropriate for all levels. Handouts will be emailed.***

Members \$200.00    Non-Members \$250.00

***REGISTER & PAY ONLINE:***

Payment in Full or a \$100.00 Deposit can be made on the website

[www.palmbeachwatercolorsociety.com](http://www.palmbeachwatercolorsociety.com)

under Workshops.

or

***PAY BY CHECK: Make the check out to PBWS and mail to:***

**PBWS c/o Jimmy Walker, PBWS c/o Jimmy Walker, 6442 Emerald Breeze Way, Boynton Beach, FL 33437**

Palm Beach Watercolor Society

## TWO DAY WATERCOLOR WORKSHOP

# DON ANDREWS, AWS

Via Zoom

Wed. April 2nd and Thurs. April 3rd, 2025

10:00 am to 3:00 pm



Don has been traveling across this country teaching watercolor workshops for over 40 years. His teaching style is traditional; he believes we learn to paint watercolor the way we learn anything else...with information and practice. Now technology has presented a wonderful new teaching opportunity for both students and teachers. Sign up for this online workshop!



### Day 1. Granulation

Luminous granular washes make watercolor special as a medium. Don walks you through the process of mixing colors on the page to create glowing granular washes.



### Day 2. Painting with Light

The most powerful visual tool we artists have is light. Don will show you how to manage, organize and manipulate light to your paintings advantage.



**PBWS Members Only**  
**Price \$225.00**

Click on the quick link below to register and pay with credit card!

[https://swipesimple.com/links/ink\\_096aab062a6d520274310adbc958e980](https://swipesimple.com/links/ink_096aab062a6d520274310adbc958e980)

**Non- Members**  
**Price \$275.00**

Click on the quick link below to register and pay with credit card!

[https://swipesimple.com/links/ink\\_9f8349ad83a2b2752582ac6f24188665](https://swipesimple.com/links/ink_9f8349ad83a2b2752582ac6f24188665)

You can Reserve Your Spot by making a \$100.00 deposit on the website:  
[www.palmbeachwatercolorsociety.com](http://www.palmbeachwatercolorsociety.com) under Workshops scroll down to "Make A Down Payment"

**PAY BY CHECK:** Make the check out to PBWS and mail to:  
PBWS c/o Jimmy Walker, 6442 Emerald Breeze Way, Boynton Beach, FL 33437



# Palm Beach Watercolor Society

## VIRTUAL PAINT-INS with PROFESSIONAL MODELS

PBWS will have virtual paint-ins with live professional models via Zoom on  
The 2nd and 4th Tuesday of the month in the morning from 10:00 A.M. to 12:45 P.M.

**Members Only - Six Sessions \$30.00**

**Non-members - Four Sessions \$40.00**

"All paint in sessions must be used within 6 months of payment date. Any unused sessions after the 6-month cutoff will be donated to PBWS. **You will get a monthly reminder of how many sessions you have remaining from Liane Kravet.**" *For example:* If you pay \$30 for 6 sessions on January 1, 2024 and miss any you will have until July 1, 2024 to make them up. We thank you for your understanding and look forward to seeing you at the Paint Ins.

Tuesday	Dec. 24	- No session due to holidays
Tuesday	Jan. 14	- Bloom Osula
Tuesday	Jan. 28	- Joe Rosing
Tuesday	Feb. 11	- Alisa Ermolaev
Tuesday	Feb. 25	- Esther Williamson

Below is the general format for the paint-in which is open to change based on input from attendees:  
3 - 5 two minute poses (warm up)  
2 five minute poses  
2 ten minute poses  
several 20 minute poses to allow you time to paint

It is not necessary to download Zoom on your computer, phone or tablet. All you need to do is click on the link in the invite letter that will be sent out a day prior to the paint-in.

**To pay by credit card:** Go to the Paint-ins Page at [www.palmbeachwatercolorsociety.com](http://www.palmbeachwatercolorsociety.com)

**To pay by check:** Please mail your checks made payable to PBWS and send to:

PBWS c/o  
PBWS c/o Jimmy Walker,  
6442 Emerald Breeze Way  
Boynton Beach, FL 33437

call **Mary Martinez (561) 704-0902** or **(561) 736-7619** for more information or  
email **Adrienne Walker [pbws2021@gmail.com](mailto:pbws2021@gmail.com)**.

### ZOOM ETIQUETTE

- 1. Be "camera" ready and on time**, and please be seated. We do not need to be taken for a spin throughout your home until you get settled. If you need to relocate during the meeting you can turn off your video.
- Please note: **before you turn on the your "video" picture ~ we hear you! Your audio is live.** You have the option to mute yourself once you join us.
- 3. Wear pants and shirts.** If you are not alone, please let it be known to others that we can see and hear them too 😊
- 4. Mute yourself once the demo begins** or we will mute you if you aren't muted. If you have a question or comment **please type your question(s) in the "chat" section.** The host or co-host will ask your question(s) when the moment is right.
- 5. Be polite.** Communicating to a large audience while demonstrating one's painting techniques can't be easy. Please show some respect and compassion.

Custom Picture Framing  
• Original Limited Edition Graphics • Posters • Prints

**Naked Wall** 10% OFF  
PBWS  
**ART GALLERIES**

Palm Square Plaza  
1217 S. Powerline Rd.  
Pompano Beach, FL 33069  
(954) 971-6710

Shoppes of Oriole  
7431-57 W. Atlantic Ave.  
Delray Beach, FL 33446  
(561) 498-7773

# Palm Beach Watercolor Society

## ANNOUNCEMENTS

### JOIN THE 2025 PBWS LUNCHEON TEAM -- IT'S FUN (AND REWARDING)!

It's not too early to get ready for our 2025 PBWS Annual Luncheon scheduled for March 12, 2025. Our annual luncheons provide needed funding for the arts and aspiring young artists in our local schools as well as an enjoyable time beloved by our members, but they are a lot of work! Each event has many, many components — We're sure that every PBWS member has at least one skill that could help us make the 2025 luncheon a success. **Contacting vendors to request materials or discount coupons that can be raffled off is just one important way you can help.** Please volunteer to make 2025 a terrific experience for all! For more information on other ways you can help contact Mary Martinéz at [artsymary@gmail.com](mailto:artsymary@gmail.com) or 561-704-0902.

### Important Dates: Quick Reference:

#### Mon. December 30th -

Pick-Up "Life Is Art" show at Parkland Library  
10:00 - 11:30

#### Thurs. January 9th - General Meeting & Demo

#### Sun. January 19th - Deadline to enter "Art In Me" show

Wed. January 22nd - "Art In Me" Take-In at Crest Theatre  
9:30 - 10:30

#### Sun. January 26th - Deadline to enter "My World In Color" show, Coral Springs

Wed. January 29th - "Art In Me" Reception Crest Theatre  
3:00 - 4:30

Fri. January 31st - Take-In "My World In Color" show, Coral Springs  
9:30 - 11:00

Tues. February 11 - Reception "My World In Color" show, Coral Springs  
5:00 - 6:30

#### Thurs. February 13th - General Meeting & Demo

Fri. February 28th - Pick-Up "My World In Color" show at Coral Springs  
9:30 - 11:00

Thurs. March 6th - Pick-Up "Art In Me" at Crest Theatre  
9:30 - 10:30

#### Thurs. March 13th - General Meeting & Demo

### *In Case You Missed This:*

#### **Judged Show or Juried Show?**

#### *What's the difference?*

The Palm Beach Watercolor Society has become aware that there is some confusion amongst our members regarding type of show and acceptance into the show. We are hoping to clarify our definition of these types of shows below:

#### **Judged Show:**

- Artworks in the show will be evaluated against each other by a judge (or a panel of judges) and prizes and/or recognition will be awarded to a few of the pieces in the show.
- If your entry fee is paid and the image of your work has been submitted and the receipt of the above has been acknowledged by PBWS via email you will be in the show unless the actual work is found not to adhere to eligibility/entry rules at take in.
- *Note:* Your entry may also not be accepted if what is needed is past the deadline or if the amount of entries exceeds the number of pieces the venue can accommodate; so do not wait to apply.

#### **Juried Show:**

- If an art show is juried, one or more persons would be looking at images of the submitted work and choose which works will be accepted into the show. The accepted works will then be judged for prizes/recognition.
- If your entry fee is paid and the image of your work has been submitted before the deadline and the receipt of the above has been acknowledged by PBWS via email, your work will be juried for acceptance into the show. Artists whose work has been accepted into the show will be notified as soon as possible after the entry deadline.
- Accepted works will be in the show unless the actual work is found not to adhere to eligibility/entry rules at take in.

**Please read the prospectus announcing the show.** This is where you will find all the information regarding the show, including the name of the show and its location; type of show; rules/eligibility/requirements; entry deadline; take-in date and time; reception date and time; and pick-up date and time. Keep the prospectus handy and /or mark the dates in your calendar. If an update must sent out, adjust accordingly.

# Palm Beach Watercolor Society

## MEMBER NEWS



### WELCOME NEW MEMBERS!

Peggy Alperin • Barbara J. Kiev • Allie Moore

Abstract Fine Artist **Karen H. Salup** exhibited with BOUNDLESS at Art Antique and Design in Lake Worth, Florida, November 1- December 3 and sold two paintings "The White Path" and "Summer Fling" to a financial company. She also sold her painting "Heart Song" to a breast surgeon in west Boca Raton at the ArtsUnited Pink Exhibit pertaining to Breast Cancer Awareness in October.



**Scarsdale Adult School** is pleased to introduce our next **Hall of Fame inductee, Hope Friedland**. A staple in our arts & crafts department for roughly twenty years, Friedland is a highly experienced instructor as well as a dedicated, friendly, informative, award-winning

watercolor and mixed media artist, lecturer, and author.

Friedland holds a master's degree in art education from Columbia University and is the organizer and director of the Westchester Artists Guild. Over the years, her work has appeared in many local juried art exhibitions, private collections, and galleries.

She finds subjects for her artwork from her travels. She uses photographs of the places she has visited to use as material and her experiences as inspiration. "Meeting people from many cultures and communities worldwide has challenged me to teach people of different ages, places and levels."

During her watercolor classes, students of all levels have been introduced to a variety of lessons in color, composition, value, and form. Each of her students has experienced the opportunity to develop a personal style through demonstrations, interesting painting topics, and pinpoint critiques. Friedland explains that there are no mistakes in watercolor, just a lot of happy accidents. Her students have described her as encouraging, giving, and an extremely knowledgeable professional with superb teaching credentials and standards.

Fittingly, this year's Hall of Fame induction ceremony will take place during the opening reception for our sixth Student/Teacher Art Show. SAS encourages all of Friedland's family, friends,

and students -- past, present, and future - to attend on Saturday, January 4, 2025, from 11:30am to 1pm in the Scott Room of the Scarsdale Public Library. Mark your calendar! The ceremony is free for the entire community. Light refreshments will be served.

**Thomas Rebek** has had his watercolor painting "Kitchen Reflections" accepted into the American Watercolor Society!

## DONATIONS

**PBWS accepts donations to raise money for our Education and Scholarship Funds.**

**Thank you to Dale Simon**

THANK YOU PREVIOUS DONORS!

Susan Hess, Adeline Weiner, Maryann Hoskins, Fran McKinley, Elizabeth Keith, Ellen Altman, Carol Z. Brody, Janet Davis, Paula Epstein, Kathy Genco, Beverly Granath, Christine Heidisch, Lynn Holland, Darrell Jacob, Beverly Jacobson, Caryn Kabat, Gloria Kasper, Lynne Koenigsberg, Liane Kravet, Hali Layton, Marilyn Liedman, Elaine Litvak, Anita Lovitt, Mary Martinez, Anthony Mazzo, Gail Michaelsen, Sandra Newman, Sheila Patterson, Susan Pecker, Ann Piekarz, Martha Prado, Cate Pratt, Norman Price, Camille Rosano, Pauline Runkle, Karen Salup, LuAnn Sampson, Joan Schultz, Judy Shneyer, Sonja Shuford, Miriam Sivak, Sharon Sponder, Karen Thornton, Harriet Waldman, Adrienne Walker, Beverly Walzer, Helene White, Gloria Young, Maryanne Driscoll, Thomas Rebek, Jeff Epstein, Patsy Heller, Karen and Ken Scott, Jan and Jane Breyer, Mac Johnson, Joan Houghton Theall, Century Village Deerfield Beach group

### Art and Frame Galerie

2300 N. Dixie Hwy.  
Boca Raton, Florida 33431  
561-362-5450  
Todd Skrecz

**20% discount on custom framing  
for Palm Beach Watercolor Society  
members**



## Ask the WATERCOLOR DOCTOR

by Carol Z. Brody NWS, TWSA  
[czbrody@carolzbrody.com](mailto:czbrody@carolzbrody.com)  
[www.carolzbrody.com](http://www.carolzbrody.com)

**QUESTION:** When I add layers of glazes to a painting as i work, the paper always buckles. I don't want to buy 300 Lb. paper because of the price, but I don't like the lumps and bumps I get with 140 Lb. paper. Help!

**ANSWER:** It's true that when you add layers of glazes to a watercolor, it will buckle when it dries. These lumps and bumps will not look good when you frame the piece. The truth is that you don't need to buy 300 Lb. paper. You can press your finished painting instead, giving it a really professional look. I've read all sorts of methods for doing this, like ironing your painting—something I'd be afraid to try—or wetting the back and stacking a board and many heavy books on top of it till it dries—too much work! Here instead is my fool-proof pressing method, which I have used for most of my career.

Turn your painting over and lay it down on your support board. Then with a 1 1/2" or 2" brush, wet the back of the painting well with clean water, making sure to cover the entire surface. Do this again and again for about 15 minutes. But, be sure to dry under the edges of your painting, as well as the wet surface of the board, with paper towels as you work. This is necessary so that any water which seeps under the edges of the painting won't start to wet the actual painting! Do this step several times as you proceed.

You will start to see the bumps disappear, and when this happens, the paper will expand slightly. At this point, smooth the paper with your hand, and clip the four corners to the board, using large bull dog spring clips. Let it dry overnight, and VOILA! Your painting will be as flat as a new piece of paper, ready to frame! Now doesn't it look great?!

Please keep sending your questions to me at [czbrody@carolzbrody.com](mailto:czbrody@carolzbrody.com).  
I'd love to hear from you!





# PALM BEACH WATERCOLOR SOCIETY

## Membership Application and Renewal Form

**\*\*\*ATTENTION, PLEASE READ CAREFULLY\*\*\***

Membership payment includes eligibility to participate in, shows, workshops, paint-in's, committees, and to serve on the PBWS Board. **Please answer YES in the appropriate box; Membership Renewal if you are a returning member OR New Membership if you are joining for the first time.** Annual dues are in effect from October 1st to September 30th.

Please complete the information below and submit this form with your payment.

Make check payable to: **Palm Beach Watercolor Society.**

**As of Oct. 1 mail check to:  
PBWS c/o Carol Hirsch  
3520 S.Ocean Blvd. Apt L 204  
Palm Beach, FL 33480**

**Dues: Single Membership \$50.00 \_\_\_\_ Family Membership \$65.00 \_\_\_\_ Lifetime \$275.00 \_\_\_\_**

The PBWS Newsletter is normally sent by e-mail. Annual charge for mailed Newsletter: \$10.00 \_\_\_\_

**New Member**

**I am Renewing my Membership**

Change of Address  Change of Phone  Change of E-mail

Name (Please Print): \_\_\_\_\_ Date: \_\_\_\_\_

Address: \_\_\_\_\_

City: \_\_\_\_\_ State: \_\_\_\_\_ Zip code: \_\_\_\_\_

Telephone: (home) \_\_\_\_\_ (cell) \_\_\_\_\_

E-MAIL: \_\_\_\_\_ Website: \_\_\_\_\_

PBWS operates on the basis of volunteers. Our members are encouraged to assist with various activities as well as serve on or chair committees.

I would like to help with (please check):

Communications  Computer  Exhibitions  Historian  Hospitality  Mailings

Membership  Newsletter  Paint-In's  Programs  Publicity  Receptions

Workshops  PBWS Board  Other \_\_\_\_\_

**Total Payment: \$ \_\_\_\_\_ Check # \_\_\_\_\_**

**\*Credit card payments [www.palmbeachwatercolorssociety.com](http://www.palmbeachwatercolorssociety.com); go to Membership  
If you have any problems paying with credit card, please call Adrienne Walker 516-885-4199.**

For further membership information, contact:

Carol Hirsch (646) 625-9785 or Lee Krull C (561)-767-6226 H (561)-357-4627

## Palm Beach Watercolor Society Board Members

Adrienne Walker <a href="mailto:pbws2021@gmail.com">pbws2021@gmail.com</a>	President / Workshop Director	(516) 885-4199 c
Bobbin Salisbury <a href="mailto:bobbinsart@gmail.com">bobbinsart@gmail.com</a>	Vice President	(561) 762-8654 c
Jimmy Walker <a href="mailto:walkertrvl@aol.com">walkertrvl@aol.com</a>	Treasurer	(561) 885-4199 c
Anita Lovitt <a href="mailto:lovittland@gmail.com">lovittland@gmail.com</a>	Recording Secretary/Paint Ins	(561) 706-3653 c
Beverly Granath <a href="mailto:bgranath@bellsouth.net">bgranath@bellsouth.net</a>	Corresponding Secretary	(561) 395-5937 c (561) 395-4416 h
Caryn Kabat <a href="mailto:carkab@aol.com">carkab@aol.com</a>	Education	(561) 523-9655 c (561) 733-0195 h
Karen H. Salup <a href="mailto:karensalup@gmail.com">karensalup@gmail.com</a>	Scholarships	(561) 715-2758 c
Carol Hirsch <a href="mailto:caroljhirsch@gmail.com">caroljhirsch@gmail.com</a>	Membership Chair	(646) 625-9785 c
Lee Krull <a href="mailto:idesign@gate.net">idesign@gate.net</a>	Newsletter/Membership	(561) 767-6226 c (561) 357-4627 h
Susan Pecker <a href="mailto:wuzcold@aol.com">wuzcold@aol.com</a>	Workshops	(561) 445-3440 c (561) 738-0170 h
Paula Epstein <a href="mailto:paintingwpaula@bellsouth.net">paintingwpaula@bellsouth.net</a>	Workshops	(561) 455-6049 c (561) 499-0304 h
Karen Thornton <a href="mailto:karenthornton860@gmail.com">karenthornton860@gmail.com</a>	Workshops	(561) 789-2664 c

## Palm Beach Watercolor Society Committee Members

Camille Rosano <a href="mailto:newcr13@aol.com">newcr13@aol.com</a>	Shows Chair	(914) 260-8690 c
Sonja Shuford <a href="mailto:sonja5880@gmail.com">sonja5880@gmail.com</a>	Committee Member	(561) 344-9174 c
Marilyn Young <a href="mailto:marilynyoungartwork@gmail.com">marilynyoungartwork@gmail.com</a>	Committee Member	(954) 461-8057 c
Mary Martinez <a href="mailto:artsymary@gmail.com">artsymary@gmail.com</a>	Paint-Ins	(561) 704-0902 c (561) 736-7619 h
Lynn Holland <a href="mailto:laplume366@gmail.com">laplume366@gmail.com</a>	Contributing Member	(561) 638-9927 h
Carol Z. Brody <a href="mailto:czbrody@carolzbrody.com">czbrody@carolzbrody.com</a>	Contributing Member	
Beverly Walzer <a href="mailto:bevwalz007@gmail.com">bevwalz007@gmail.com</a>	Paint-Ins	(561) 866-8666 c
Liane Kravet <a href="mailto:kravet.4210@gmail.com">kravet.4210@gmail.com</a>	Paint-Ins	(954) 249-9494 c