

October 2024



**GENERAL MEETINGS
WITH DEMOS/TALKS
2024 - 2025**

**Second Thursday
of the Month**

**MEETINGS WILL BE
HELD VIA ZOOM**

Please join us at 6:00 p.m.
(meeting will begin at 6:30 p.m.)
Zoom Link will be e-mailed.

**October 10
with: Bob Burridge**

**November 14
with: Donna Morrison**

**December 12
with: Jan Guarino**

**January 9
with: Don Andrews**

**February 13
with: Pam Wenger**

For up-to-date information about
Palm Beach Watercolor Society
www.palmbeachwatercolorsociety.com

“Like” Palm Beach Watercolor
Society on Facebook

Visit PBWS virtual fb gallery ~
[https://www.facebook.com/
groups/pbwatercolor/?
ref=pages_profile_groups_tab&
source_id=121875457873375](https://www.facebook.com/groups/pbwatercolor/?ref=pages_profile_groups_tab&source_id=121875457873375)

contact Adrienne Walker
pbws2021@gmail.com

Palm Beach Watercolor Society

Dear Artists,

I am looking forward to returning to Florida in a few weeks. I'm happy to still be up in the New York Catskill Mountains with the beautiful fall colors. Every day Mother Nature paints more and more colors onto the leaves of the trees. It's very inspiring.

I hope that you are all doing the same with your palettes and painting to get ready for all the shows that are coming up this season. Remember to renew your membership in order to participate in everything that Palm Beach Watercolor/Media Society has to offer. Our new season starts on October 1st and continues until September 30th. We have great demo artists every month of the year.

I would like to wish all of our members and their families celebrating the holidays in October a very Happy and Healthy New Year. Let it be a good year for all of us whether or not we observe.

I've gotten several emails regarding sending the correct size of a painting when entering one of our shows. If your painting is framed, you enter the size of the frame *not* the painting. You can not use glass in the frame. You can either use plexi glass or varnish the painting. If you varnish the painting whether watercolor or acrylic you can frame it as is. If you have any questions about the shows please email Camille Rosano.

Happy Painting,
Adrienne Walker, President PBWS
www.palmbeachwatercolorsociety.com
pbws2021@gmail.com

PBWS MEMBERSHIP If you have not renewed
EXPIR: 10/01/24 your membership, please note
that it will expire this October 1st!
Take a moment now to renew!

Renewing is really easy and can be done simply by going to our website www.palmbeachwatercolorsociety.com and clicking on MEMBERSHIPS. It only takes a minute and a credit card! To pay by check please find Membership Application and Renewal form with payment instructions near the end of this newsletter.

PAYMENTS BY CHECK AS OF OCT. 1, 2024:

Membership Renewal and New Members paying by check: Please download and fill out the form at the end of this newsletter. Send it in along with your check made payable to the Palm Beach Watercolor Society to:

**PBWS c/o Carol Hirsch
3520 S.Ocean Blvd. Apt L 204
Palm Beach, FL 33480**

Paying for something else by check: Note what you are paying for on the check. Make the check payable to the Palm Beach Watercolor Society and mail to:

**PBWS c/o Jimmy Walker
6442 Emerald Breeze Way
Boynton Beach, FL 33437**

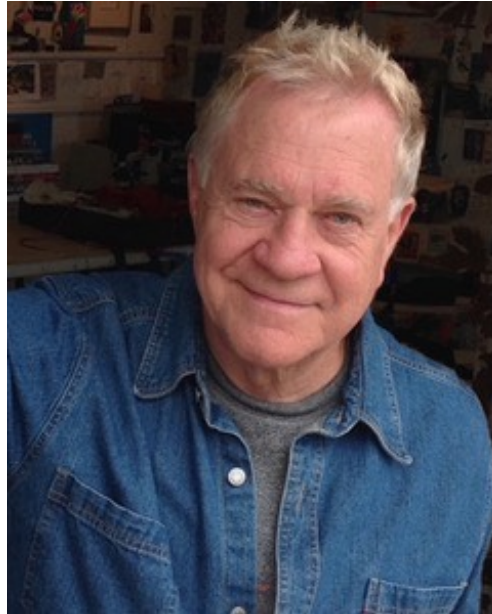
Palm Beach Watercolor Society

MEET OUR OCTOBER DEMO ARTIST

OCTOBER 10th 2024, Member Meeting Via Zoom

Bob Burridge

Make a memorable painting!



Bob will go over key points for creating paintings that judges and collectors remember! Included in this presentation: Demos on Light source, shadows and painting the WOW.

Robert Burridge, a noted award-winning Industrial Designer who, after twenty-five years in the corporate world, focused his life to painting everyday. Burridge attributes his success to his education from the University of the Arts in Philadelphia, his stint as an adjunct professor at Cooper Union in New York City, and in 1966, his Fluxus art performances with Yoko Ono, Nam June Paik, Jim McWilliams and Charlotte Moorman.

His work hangs in permanent collections of international embassies, corporate galleries and art colleges. His solo museum exhibitions received positive attention, so he was invited to exhibit his paintings at the Smithsonian Folklife Circus Arts Festival in Washington, DC.

REMINDER: We have video recordings of monthly meeting demos and workshops. If you are a member, there is **no fee for the monthly meeting demo recordings**. The fee for guests is **\$25 for one meeting demo recording**.

If you **attended a workshop** and the workshop was recorded by PBWS with permission from the artist ~ and you would like a copy of the video recording the fee is **\$15 for 1 day, \$30 for 2 days, and \$45 for 3 days**.

If you **did not attend the workshop** the fee for the video recording is **\$75 for 1 day, \$150 for 2 days, and \$225 for 3 days**. The monies will go towards our scholarship fund.

Palm Beach Watercolor Society

CALL TO OUR ARTISTS



PALM BEACH WATERCOLOR/MEDIA SOCIETY

Invites Members to a Juried Art Show

THE COLORS OF MY WORLD

November 15, 2025 - April, 2025

At BRiC (Boca Raton Innovation Campus)

4950 Communications Ave., Boca Raton, FL 33431

Take-in: Wednesday, November 13, from 9:30-11:00

Pick-Up: TBD in April, 2025, from 9:30-10:30

Reception at BRiC on Tuesday, December 3, 5:00-6:30

Eligibility: Artists may enter 1 piece of art. Minimum size, framed or on canvas is 16 x 20. Maximum size, framed or on canvas is 48 wide x 60 high. Canvas must be stapled on back and not on the sides!

Entry Fee: \$35

Entry Rules: Enter the exhibit through our website www.palmbeachwatercolorssociety.com click on "shows" and pay with your credit card. You will then need to email your jpeg to Lee Krull at idesign@gate.net. Please include your name in the email and the title of the painting above the jpeg. Do not show any frame or mat in the image and ensure the image is correctly oriented, either horizontally or vertically. Paintings that are not correctly oriented and/or cropped will NOT be accepted in the show. **Entries will be accepted thru November 8.**

Eligible Artwork: Watercolors, Acrylics, and water based Inks may be entered into the show. Watermedia collage made by an artist's own artwork is acceptable but newspaper, magazine or other non-watermedia cutouts will NOT be accepted. Heavy graphite, oil pastels, foils, buttons, string are also NOT accepted. White tissue paper, rice paper, handmade paper and washi that has been painted over by the artist is acceptable. Oils, pastels, charcoal, drawings, photography, prints or giclees will be NOT be accepted. Images should be of your original art only, and not created under instruction or copied from another artist's work. Only your own, original photographs may be used for reference. Paintings that have been exhibited in prior PBWS shows are NOT eligible.

Framing Requirements: Paintings on paper must be glazed with plexiglass or varnished. Glass will not be accepted. Works on other surfaces, if not framed, must have wrapped edges, with no staples showing. All work must be wired firmly, taped and ready to hang. All entries must remain hanging for the duration of the show. **BRiC will not accept artwork with carved or gilded frames or frames that are larger than 2" wide.**

Please include the following information on the back of your painting:
Artist Name, Address, Phone, Email, Title of Painting, Media, Size and Price.

Juror: We are pleased to announce that Ted Matz will be judging our show. Ted is well known to PBWS. He has given various demos to our membership and has taught workshops for us as well. He is always well received and always provides professional insight to our group. We look forward to his selection of winners for this show.

Waiver of Liability: By submitting artwork into the exhibit, you agree to abide by all rules and regulations in this prospectus of the Palm Beach Watercolor Society. PBWS reserves the right to use artwork for publicity and promotion. PBWS is entitled to a 10% donation on the sale of any artwork during the exhibit.

Quick Link to register and pay with credit card:

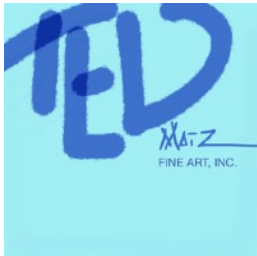
PALM BEACH WATERCOLOR • \$35.00
swipesimple.com

Palm Beach Watercolor Society

TWO DAY WORKSHOP

Loosen up your painting style!!!

Fundamentals of Abstract Painting with TED MATZ



JANUARY 13th & 14th, 2025

9:30 - 3:30

at JCC Boynton Beach

8500 S. Jog Road

Members \$250.00 Non-Members \$300.00



"Between Here and There"

You will learn simple techniques that will help loosen up your paintings regardless of your current style.

This course will help you to improve on studio practices, discover new methods of mark making and learn an approach that will make your work more creative.

Open to all levels of experience.



"Above the White Moon"

"I personally believe that creativity is not an inherited skill that is passed on genetically but is something that can be learned by changing old perceptions and habits. Everyone is creative. You just must find out where your creative bent leads you," Ted Matz

WORKSHOP SUPPLY LIST:

ACRYLIC PAINT COLORS:

The colors I consider essential are...Yellow Ochre, Cadmium Yellow, Cadmium Red, Alizarin Crimson, Burnt Sienna, Cobalt Blue, Ultramarine Blue and Raw Umber. You may use any other paint colors that you already have and feel free to use them.

SUBSTRATES:

DO NOT BRING STRETCHED CANVAS OR CANVAS PANELS. All studies will be done on paper.

Bristol Paper is what will be used to paint and sketch on and will be the substrate for all work produced. The recommended size is 18 x 24 and no smaller than 11"x14" and have a "smooth or vellum surface.

BRUSHES/MARK MAKING MATERIALS:

Bring a variety of brushes, preferable old brushes that are no longer valued and any instrument that you can find that will

help to make a mark on your painting. Any household tool that will help to make a texture or make unusual marks with the paint can be used. We will be using any tool or instrument that can make a mark or be used to scrape the surface of the paper to make a variety of textures.

Other suggested supplies are conte crayon in black, red and white, India ink (waterproof), graphite sticks, soft lead pencils, charcoal pencils, vine charcoal, palette knives in various shapes (if you have some). Exacto knife and razor blades, metal ruler (plastic and wood will also do).

MISCELLANEOUS ITEMS

A roll of blue painter's tape 1" wide. Large container for water, paper towels, paper palette or some form of palette to work on.

It is important that you have paper, paint and brushes ready for the first session.

REGISTER & PAY ONLINE:

Payment in Full or a \$100.00 Deposit can be made on the website

www.palmbeachwatercolorssociety.com

under Workshops.

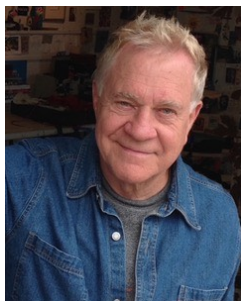
or

PAY BY CHECK: Make the check out to PBWS and mail to:

PBWS c/o Jimmy Walker, PBWS c/o Jimmy Walker, 6442 Emerald Breeze Way, Boynton Beach, FL 33437

Palm Beach Watercolor Society

TWO DAY WORKSHOP



Bob Burrige

Painting Loose Florals & Landscapes Two Days of Intense Fun! *Via Zoom*

February 19th and 20th, 2025

11:00 am - 1:00 pm - lunch break - 2:00 pm to 4:00 pm

Abstract Florals from Loose, Colorful Splatters

Paint modern, loose abstract florals that sell like crazy. Learn the secrets of Monet and others as you turn those colorful splashes into quick little gems. These Burrige “daily warmups.” Playing with wild colors, you will paint loose starts into little beauties.

You will learn how to make a vase of abstract flowers from a mess, using reductive painting techniques. We will work with different vase shapes, styles and learn how to paint stems and water!



Loose Abstract Landscapes

Paint with free rein and learn to run wild with looser landscape painting. Learn quick spontaneity with your imagination for maximum effect! Paint warm-up exercises using Bob's four favorite basic compositions: Horizontal, Tunnel, Asymmetrical and Golden Section.

We will work with black and white acrylic paint to learn structure and value. Then switch to color, using both transparent and opaque acrylics.



If you are looking for more fun, this is for you! Burrige's positive, fearless and supportive approach inspires everyone to paint with endless possibilities.

Burrige will provide many demos, critiques, and painting time. This workshop is appropriate for all levels. Handouts will be emailed.

Members \$200.00 Non-Members \$250.00

REGISTER & PAY ONLINE:

Payment in Full or a \$100.00 Deposit can be made on the website

www.palmbeachwatercolorsociety.com

under Workshops.

or

PAY BY CHECK: Make the check out to PBWS and mail to:

PBWS c/o Jimmy Walker, PBWS c/o Jimmy Walker, 6442 Emerald Breeze Way, Boynton Beach, FL 33437

Palm Beach Watercolor Society

VIRTUAL PAINT-INS with PROFESSIONAL MODELS

PBWS will have virtual paint-ins with live professional models via Zoom on
The 2nd and 4th Tuesday of the month in the morning from 10:00 A.M. to 12:45 P.M.

Members Only - Six Sessions \$30.00

Non-members - Four Sessions \$40.00

"All paint in sessions must be used within 6 months of payment date. Any unused sessions after the 6-month cutoff will be donated to PBWS. **You will get a monthly reminder of how many sessions you have remaining from Liane Kravet.**" *For example:* If you pay \$30 for 6 sessions on January 1, 2024 and miss any you will have until July 1, 2024 to make them up. We thank you for your understanding and look forward to seeing you at the Paint Ins.

Tuesday	Sept. 24	- Renna Zimmer
Tuesday	Oct. 8	- Meghan Piper Johnson
Tuesday	Oct. 22	- Nica Sweet
Tuesday	Nov. 5	- Matt Knife
Tuesday	Nov. 19	- Sara Misch

Below is the general format for the paint-in which is open to change based on input from attendees:
3 - 5 two minute poses (warm up)
2 five minute poses
2 ten minute poses
several 20 minute poses to allow you time to paint

It is not necessary to download Zoom on your computer, phone or tablet. All you need to do is **click on the link in the invite letter that will be sent out a day prior to the paint-in.**

To pay by credit card: Go to the Paint-ins Page at www.palmbeachwatercolorsociety.com

To pay by check: Please mail your checks made payable to PBWS and send to:

**PBWS c/o
PBWS c/o Jimmy Walker,
6442 Emerald Breeze Way
Boynton Beach, FL 33437**

call **Mary Martinez (561) 704-0902** or **(561) 736-7619** for more information or
email **Adrienne Walker pbws2021@gmail.com**.

ZOOM ETIQUETTE

- 1. Be "camera" ready and on time**, and please be seated. We do not need to be taken for a spin throughout your home until you get settled. If you need to relocate during the meeting you can turn off your video.
- Please note: **before you turn on the your "video" picture ~ we hear you! Your audio is live.** You have the option to mute yourself once you join us.
- 3. Wear pants and shirts.** If you are not alone, please let it be known to others that we can see and hear them too 😊
- 4. Mute yourself once the demo begins** or we will mute you if you aren't muted. If you have a question or comment **please type your question(s) in the "chat" section.** The host or co-host will ask your question(s) when the moment is right.
- 5. Be polite.** Communicating to a large audience while demonstrating one's painting techniques can't be easy. Please show some respect and compassion.

Custom Picture Framing
• Original Limited Edition Graphics • Posters • Prints

**Naked
Wall**

10% OFF
PBWS

ART GALLERIES

Palm Square Plaza
1217 S. Powerline Rd.
Pompano Beach, FL 33069
(954) 971-6710

Shoppes of Oriole
7431-57 W. Atlantic Ave.
Delray Beach, FL 33446
(561) 498-7773

Palm Beach Watercolor Society

MEMBER NEWS



WELCOME NEW MEMBER!

Michelle Sherman

A note from **Palmetto Elementary School...**

*Thank you so much for the grant items!!!
We truly appreciate the generosity and
support of the watercolor society! I can't
wait to use the paints provided.*

Have a wonderful day :)

*Sincerely,
Jody Dragon*

The **Boca Raton Museum of Art** is looking for candidates for the upcoming Special Exhibitions Guide Class which starts in early October. The museum will be presenting a show called "Splendor and Passion: Baroque Spain and its Empire". These paintings are coming from the Hispanic Society Museum in NYC and will be here from November 6 through March 30, 2025. The museum planners are expecting large crowds for this show and additional volunteers are needed. Anyone interested should contact Bari Martz at bmartz@bocamuseum.org

See The Show:

**PALM BEACH WATERCOLOR
SOCIETY**

“ART FROM THE SOUL”

At

**BRiC (Boca Raton Innovation Campus)
4950 Communications Ave., Boca
Raton, FL 33431**

April 17th – November 7, 2024

Share your news! Send an e-mail to Lee Krull at idesign@gate.net for publication in the next newsletter!

DONATIONS

**PBWS accepts donations to raise money for our
Education and Scholarship Funds.**

Elaine Litvak has donated to the Scholarship Fund.

THANK YOU PREVIOUS DONORS!

Susan Hess, Adeline Weiner, Maryann Hoskins, Fran McKinley, Elizabeth Keith, Ellen Altman, Carol Z. Brody, Janet Davis, Paula Epstein, Kathy Genco, Beverly Granath, Christine Heidisch, Lynn Holland, Darrell Jacob, Beverly Jacobson, Caryn Kabat, Gloria Kasper, Lynne Koenigsberg, Liane Kravet, Hali Layton, Marilyn Liedman, Elaine Litvak, Anita Lovitt, Mary Martinez, Anthony Mazzo, Gail Michaelsen, Saundra Newman, Sheila Patterson, Susan Pecker, Ann Piekarz, Martha Prado, Cate Pratt, Norman Price, Camille Rosano, Pauline Runkle, Karen Salup, LuAnn Sampson, Joan Schultz, Judy Shneyer, Sonja Shuford, Miriam Sivak, Sharon Sponder, Karen Thornton, Harriet Waldman, Adrienne Walker, Beverly Walzer, Helene White, Gloria Young, Maryanne Driscoll, Thomas Rebek, Jeff Epstein, Patsy Heller, Karen and Ken Scott, Jan and Jane Breyer, Mac Johnson, Joan Houghton Theall, Century Village Deerfield Beach group

Art and Frame Galerie

2300 N. Dixie Hwy.

Boca Raton, Florida 33431

561-362-5450

Todd Skrecz

**20% discount on custom framing
for Palm Beach Watercolor Society
members**

Ask the WATERCOLOR DOCTOR

by Carol Z. Brody NWS, TWSA

czbrody@carolzbrody.com

www.carolzbrody.com

This month's column is a continuation of last month's suggestions for setting yourself up to paint and practicing good habits when you do paint. While I know that everyone works differently, I think that these ideas are pretty universal for good results. I'm writing these hints for watercolors, not for acrylics.

1. Before you begin a new work, clean off your palette surface so that you aren't influenced by the colors you used previously and can start with a fresh concept of color in your new work. (This also enables you to avoid having muddied colors to begin with!)

2. After you use a brush, rinse off the paint in your water so that, if you need to use that brush again later on, it is clean. The proper way to rinse a brush, to get all the paint out, is to tap the brush several times in your water against the bottom of your water container, bending the hairs to loosen the paint from them. Then wipe the brush several times on the top of the water container to wipe away the excess water. Don't try to shake off or tap off the water, and don't press the hairs against the inside of the water container, thinking it will get rid of the excess water, because it won't. Instead, you may put water spatters on your painting, or end up with a too wet brush. (My students have been hearing this from me for a long time, but some of them still think they know better, until they run into trouble!) If you practice this correctly, it will become a habit. If you are still one of those people who perpetually has a too wet brush, try wiping it on a damp sponge to remove the excess water, but don't dry your brush with a towel or it will be too dry.

3. Carry your paper so that it is protected from scratches and dents. This probably will require a separate bag or portfolio. Paper is expensive, so treat it with care.

4. Use an old mat for "trying on" purposes, as you work on your paintings. When my paintings are about half done, I start to lay them down on the floor with an old mat or mat strips around them, and look at them carefully and critically. I can begin to see where the painting is taking me and where it needs other go. I do this repeatedly as I work on a piece, especially as I approach the finish. As I start to complete a work, I spend as much time looking at it on the floor and analyzing it as I do actually painting it. Every painting seems to undergo a number of "finishes" too, over a number of days! I keep thinking it's finished and then discover ways I can still strengthen it, or eliminate some aspect which doesn't quite work. Learn to critique your work and take your time doing it, and your paintings will be better for it.

5. Finally, if it's at all possible, set aside a room to a portion of one as your studio, where you can leave your materials and your painting spread out while you are working on it. This will encourage you to work, whether or not you have a dedicated slot of time. Psychologically, it also validates you as an artist, and what could be better than that?!

Please keep sending your questions to me at czbrody@carolzbrody.com. I'd love to hear from you!





PALM BEACH WATERCOLOR SOCIETY

Membership Application and Renewal Form

*****ATTENTION, PLEASE READ CAREFULLY*****

Membership payment includes eligibility to participate in, shows, workshops, paint-in's, committees, and to serve on the PBWS Board. **Please answer YES in the appropriate box; Membership Renewal if you are a returning member OR New Membership if you are joining for the first time.** Annual dues are in effect from October 1st to September 30th.

Please complete the information below and submit this form with your payment.

Make check payable to: **Palm Beach Watercolor Society.**

**As of Oct. 1 mail check to:
PBWS c/o Carol Hirsch
3520 S.Ocean Blvd. Apt L 204
Palm Beach, FL 33480**

Dues: Single Membership \$50.00 ____ Family Membership \$65.00 ____ Lifetime \$275.00 ____

The PBWS Newsletter is normally sent by e-mail. Annual charge for mailed Newsletter: \$10.00 ____

New Member **I am Renewing my Membership**

Change of Address Change of Phone Change of E-mail

Name (Please Print): _____ Date: _____

Address: _____

City: _____ State: _____ Zip code: _____

Telephone: (home) _____ (cell) _____

E-MAIL: _____ Website: _____

PBWS operates on the basis of volunteers. Our members are encouraged to assist with various activities as well as serve on or chair committees.

I would like to help with (please check):

Communications Computer Exhibitions Historian Hospitality Mailings

Membership Newsletter Paint-In's Programs Publicity Receptions

Workshops PBWS Board Other _____

Total Payment: \$ _____ Check # _____

***Credit card payments www.palmbeachwatercolorssociety.com; go to Membership
If you have any problems paying with credit card, please call Adrienne Walker 516-885-4199.**

For further membership information, contact:

Carol Hirsch (646) 625-9785 or Lee Krull C (561)-767-6226 H (561)-357-4627

Palm Beach Watercolor Society Board Members

Adrienne Walker pbws2021@gmail.com	President / Workshop Director	(516) 885-4199 c
Lynne Koenigsberg jade11611@comcast.net	Vice President	(561) 926-3082 c
Jimmy Walker walkertrvl@aol.com	Treasurer	(561) 885-4199 c
Anita Lovitt lovittland@gmail.com	Recording Secretary/Paint Ins	(561) 706-3653 c
Beverly Granath bgranath@bellsouth.net	Corresponding Secretary	(561) 395-5937 c (561) 395-4416 h
Caryn Kabat carkab@aol.com	Education	(561) 523-9655 c (561) 733-0195 h
Karen H. Salup karensalup@gmail.com	Scholarships	(561) 715-2758 c
Carol Hirsch caroljhirsch@gmail.com	Membership Chair	(646) 625-9785 c
Lee Krull idesign@gate.net	Newsletter/Membership	(561) 767-6226 c (561) 357-4627 h
Susan Pecker wuzcold@aol.com	Workshops	(561) 445-3440 c (561) 738-0170 h
Paula Epstein paintingwpaula@bellsouth.net	Workshops	(561) 455-6049 c (561) 499-0304 h
Karen Thornton karenthornton860@gmail.com	Workshops	(561) 789-2664 c

Palm Beach Watercolor Society Committee Members

Camille Rosano newcr13@aol.com	Shows Chair	(914) 260-8690 c
Sonja Shuford sonja5880@gmail.com	Committee Member	(561) 344-9174 c
Marilyn Young marilynyoungartwork@gmail.com	Committee Member	(954) 461-8057 c
Mary Martinez artsymary@gmail.com	Paint-Ins	(561) 704-0902 c (561) 736-7619 h
Lynn Holland laplume366@gmail.com	Contributing Member	(561) 638-9927 h
Carol Z. Brody czbrody@carolzbrody.com	Contributing Member	
Beverly Walzer bevwalz007@gmail.com	Paint-Ins	(561) 866-8666 c
Liane Kravet kravet.4210@gmail.com	Paint-Ins	(954) 249-9494 c