

AUGUST 2024



**GENERAL MEETINGS
WITH DEMOS/TALKS
2024**

**Second Thursday
of the Month**

**MEETINGS WILL BE
HELD VIA ZOOM**

Please join us at 6:00 p.m.
(meeting will begin at 6:30 p.m.)
Zoom Link will be e-mailed.

August 8
with: **Anita Lovitt**

Sept 12
with: **Miles Laventhall**

Oct 10
with: **Bob Burrige**

For up-to-date information about
Palm Beach Watercolor Society
www.palmbeachwatercolorssociety.com

“Like” Palm Beach Watercolor
Society on Facebook

Visit PBWS virtual fb gallery ~
[https://www.facebook.com/
groups/pbwatercolor/?
ref=pages_profile_groups_tab&
source_id=121875457873375](https://www.facebook.com/groups/pbwatercolor/?ref=pages_profile_groups_tab&source_id=121875457873375)

contact Adrienne Walker
pbws2021@gmail.com

Palm Beach Watercolor Society

Dear Artist Friends,

Time flies! It is time to renew your membership as our new year begins on October 1st, 2024 and will take you through September 30, 2025.

Membership affords you the opportunity to take part in our Monthly Meetings with Guest Artist Demos, twice monthly Paint-In's with Professional Models, Workshops in person and on zoom, and Many Venues and Opportunities to Show Your Work. In addition, we are once again holding our annual luncheon which will be held in March. At the luncheon you can socialize with other artist friends.

Take a moment now to renew! Renewing is really easy and can be done simply by going to our website www.palmbeachwatercolorssociety.com and clicking on MEMBERSHIPS. It only takes a minute and a credit card!

If you have already renewed your membership or are a Lifetime member we thank you very much. We look forward to another great year with the Palm Beach Watercolor Society and all of its talented members.

All good wishes,

Carol Hirsch
Membership Chair PBWS

To pay by check please find Membership Application and Renewal form with payment instructions near the end of this newsletter.

PAYMENTS BY CHECK OVER THE SUMMER

Membership Renewal and New Members who are paying by check, please download and fill out the form at the end of this newsletter and send it in along with your check.

If you are paying for something else, note what you are paying for on the check.

ALL checks should be made payable to the Palm Beach Watercolor Society and be mailed to:

**PBWS c/o
Jimmy Walker
P.O. Box 18
Smallwood, N.Y. 12778**

See The Show:

PALM BEACH WATERCOLOR SOCIETY

“ART FROM THE SOUL”

At

**BRiC (Boca Raton Innovation Campus)
4950 Communications Ave., Boca Raton, FL 33431**

April 17th – November 2024



Palm Beach Watercolor Society
CALL TO ARTISTS



HarborChase at Boynton Beach

Thursday, Nov 7

2:00 to 5:00 pm

Set up at 2:00 pm

Deadline to enter: November 1st

*(If you signed up for the previous March date
your payment is good for Nov 7)*

Since 2002, HarborChase has been a leading senior housing industry with a mission to develop and manage exceptional communities by providing best-in-class hospitality, resident programs, personalized care and superior cuisine. As part of their life enrichment programs, they have asked the Palm Beach Watercolor Society to hold an Art Show & Sale in 3 of their South Florida facilities. Events at HarborChase's Palm Beach Gardens and Wellington have already been held. HarborChase Boynton Beach is the last opportunity to participate in this event. **PBWS takes only 10% of all sales at our events.**

Each artist may bring 2-5 pieces of art which will be displayed throughout the facility. Artists are requested to bring their own easels if possible.

In order to participate you will be asked for a \$10.00 donation to PBWS scholarship and arts supply fund. You will pay and enter your information through www.palmbeachwatercolorsociety.com. A link has been set up on the Shows page with the link to Swipe Simple. You can start by applying now.

HarborChase will provide a complimentary themed cocktail bar, a wine tasting bar and 3 complimentary food stations during the event. They will be advertising the event on social media, the residents' family, to their contacts, and to the public. They will also advertise each event on Legends Radio and in local newspapers.

We hope you will take advantage of this terrific opportunity to come and show and sell your work!

Palm Beach Watercolor Society
MEET OUR AUGUST DEMO ARTIST

ANITA LOVITT

AUGUST 8th 2024, Member Meeting Via Zoom

Paint along if you like!



Anita Lovitt has been an illustrator, designer, painter and currently teaches painting. She graduated from Philadelphia College of Art and took masters level classes in design for theater at the University of Kansas. She is best known for her "Dancing Pineapples" mural which graced a wall in Delray Beach for 13 years and became emblematic of the town.

Ms. Lovitt enjoys sharing her long experience with students who are eager to learn from and enjoy it. "I especially like to see students light up and watch their work take off," she says. Her classes are fun and mutually supportive.

Anita was fortunate to learn from some fantastic artists, Milton Glaser and Charles Reid among them. Other names might not be as well known, but the legendary Robert Beverly Hale was her artistic anatomy teacher. Anita brings this knowledge to posing the model at PBWS paint-ins.

She has also been Recording Secretary for PBWS for many years, and has taught numerous workshops for our organization.

Anita will paint a subject in watercolor she is calling "Lambertville Canal." Perhaps some of you have been to this charming town not far from Philadelphia and New York. It was a peaceful, overcast day when she took this picture. Her demo will include some of the following concepts:

1. The importance of design and value
2. Wet and dry techniques
3. Reflections
4. Departing from the tyranny of realism

If you'd like to paint along, here are some of the colors Anita will be using: Neutral Tint, Cerulean Blue, Permanent Green Light, Sap Green, Light Red (or Burnt Sienna), Pyrelene Green, Sepia, Permanent White gouache (if needed). She will likely be using a #6 and a #10 round.



Please contact Anita at 561 706 3673 or lovittland@gmail.com if you would like more info on her paintings and classes.

REMINDER: We have video recordings of monthly meeting demos and workshops. If you are a member, there is **no fee for the monthly meeting demo recordings**. The fee for guests is **\$25 for one meeting demo recording**.

If you **attended a workshop** and the workshop was recorded by PBWS with permission from the artist ~ and you would like a copy of the video recording the fee is **\$15 for 1 day, \$30 for 2 days, and \$45 for 3 days**.

If you **did not attend the workshop** the fee for the video recording is **\$75 for 1 day, \$150 for 2 days, and \$225 for 3 days**. The monies will go towards our scholarship fund.

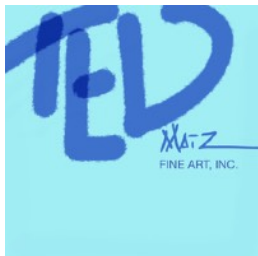
Palm Beach Watercolor Society

TWO DAY WORKSHOP

Loosen up your painting style!!!

Fundamentals of Abstract Painting

with TED MATZ



JANUARY 13th & 14th, 2025

9:30 - 3:30

at JCC Boynton Beach

8500 S. Jog Road

Members \$250.00 Non-Members \$300.00



"Between Here and There"

You will learn simple techniques that will help loosen up your paintings regardless of your current style.

This course will help you to improve on studio practices, discover new methods of mark making and learn an approach that will make your work more creative.

Open to all levels of experience.



"Above the White Moon"

"I personally believe that creativity is not an inherited skill that is passed on genetically but is something that can be learned by changing old perceptions and habits. Everyone is creative. You just must find out where your creative bent leads you," Ted Matz

WORKSHOP SUPPLY LIST:

ACRYLIC PAINT COLORS:

The colors I consider essential are...Yellow Ochre, Cadmium Yellow, Cadmium Red, Alizarin Crimson, Burnt Sienna, Cobalt Blue, Ultramarine Blue and Raw Umber. You may use any other paint colors that you already have and feel free to use them.

SUBSTRATES:

DO NOT BRING STRETCHED CANVAS OR CANVAS PANELS. All studies will be done on paper.

Bristol Paper is what will be used to paint and sketch on and will be the substrate for all work produced. The recommended size is 18 x 24 and no smaller than 11"x14" and have a "smooth or vellum surface.

BRUSHES/MARK MAKING MATERIALS:

Bring a variety of brushes, preferable old brushes that are no longer valued and any instrument that you can find that will

help to make a mark on your painting. Any household tool that will help to make a texture or make unusual marks with the paint can be used. We will be using any tool or instrument that can make a mark or be used to scrape the surface of the paper to make a variety of textures.

Other suggested supplies are conte crayon in black, red and white, India ink (waterproof), graphite sticks, soft lead pencils, charcoal pencils, vine charcoal, palette knives in various shapes (if you have some). Exacto knife and razor blades, metal ruler (plastic and wood will also do).

MISCELLANEOUS ITEMS

A roll of blue painter's tape 1" wide. Large container for water, paper towels, paper palette or some form of palette to work on.

It is important that you have paper, paint and brushes ready for the first session.

REGISTER & PAY ONLINE:

Payment in Full or a \$100.00 Deposit can be made on the website

www.palmbeachwatercolorssociety.com

under Workshops.

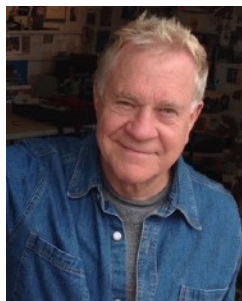
or

PAY BY CHECK: Make the check out to PBWS and mail to:

PBWS c/o, Jimmy Walker, P.O. Box 18, Smallwood, N.Y. 12778

Palm Beach Watercolor Society

TWO DAY WORKSHOP



Bob Burrige

Painting Loose Florals & Landscapes Two Days of Intense Fun! *Via Zoom*

February 19th and 20th, 2025

11:00 am - 1:00 pm - lunch break - 2:00 pm to 4:00 pm

Abstract Florals from Loose, Colorful Splatters

Paint modern, loose abstract florals that sell like crazy. Learn the secrets of Monet and others as you turn those colorful splashes into quick little gems. These Burrige “daily warmups.” Playing with wild colors, you will paint loose starts into little beauties.

You will learn how to make a vase of abstract flowers from a mess, using reductive painting techniques. We will work with different vase shapes, styles and learn how to paint stems and water!



Loose Abstract Landscapes

Paint with free rein and learn to run wild with looser landscape painting. Learn quick spontaneity with your imagination for maximum effect! Paint warm-up exercises using Bob's four favorite basic compositions: Horizontal, Tunnel, Asymmetrical and Golden Section.

We will work with black and white acrylic paint to learn structure and value. Then switch to color, using both transparent and opaque acrylics.



If you are looking for more fun, this is for you! Burrige's positive, fearless and supportive approach inspires everyone to paint with endless possibilities.

Burrige will provide many demos, critiques, and painting time. This workshop is appropriate for all levels. Handouts will be emailed.

Members \$200.00 Non-Members \$250.00

REGISTER & PAY ONLINE:

Payment in Full or a \$100.00 Deposit can be made on the website

www.palmbeachwatercolorsociety.com

under Workshops.

or

PAY BY CHECK: Make the check out to PBWS and mail to:

PBWS c/o, Jimmy Walker, P.O. Box 18, Smallwood, N.Y. 12778

Palm Beach Watercolor Society

VIRTUAL PAINT-INS with PROFESSIONAL MODELS

PBWS will have virtual paint-ins with live professional models via Zoom on
The 2nd and 4th Tuesday of the month in the morning from 10:00 A.M. to 12:45 P.M.

Members Only - Six Sessions \$30.00

Non-members - Four Sessions \$40.00

"All paint in sessions must be used within 6 months of payment date. Any unused sessions after the 6-month cutoff will be donated to PBWS. **You will get a monthly reminder of how many sessions you have remaining from Liane Kravet.**" For example: If you pay \$30 for 6 sessions on January 1, 2024 and miss any you will have until July 1, 2024 to make them up. We thank you for your understanding and look forward to seeing you at the Paint Ins.

Tuesday	August 13	- Joe Rosing - new model
Tuesday	August 27	- Esther Williamson
Tuesday	Sept. 10	- Pasquelino Beltempo
Tuesday	Sept. 24	- Renna Zimmer

Below is the general format for the paint-in which is open to change based on input from attendees:
3 - 5 two minute poses (warm up)
2 five minute poses
2 ten minute poses
several 20 minute poses to allow you time to paint

It is not necessary to download Zoom on your computer, phone or tablet. All you need to do is **click on the link in the invite letter that will be sent out a day prior to the paint-in.**

To pay by credit card: Go to the Paint-ins Page at www.palmbeachwatercolorsociety.com

To pay by check: Please mail your checks made payable to PBWS and send to:

**PBWS c/o
Jimmy Walker
P.O. Box 18
Smallwood, N.Y. 12778**

call **Mary Martinez (561) 704-0902** or **(561) 736-7619** for more information or
email **Adrienne Walker pbws2021@gmail.com**.

ZOOM ETIQUETTE

- 1. Be "camera" ready and on time**, and please be seated. We do not need to be taken for a spin throughout your home until you get settled. If you need to relocate during the meeting you can turn off your video.
- Please note: **before you turn on the your "video" picture ~ we hear you! Your audio is live.** You have the option to mute yourself once you join us.
- 3. Wear pants and shirts.** If you are not alone, please let it be known to others that we can see and hear them too 😊
- 4. Mute yourself once the demo begins** or we will mute you if you aren't muted. If you have a question or comment **please type your question(s) in the "chat" section.** The host or co-host will ask your question(s) when the moment is right.
- 5. Be polite.** Communicating to a large audience while demonstrating one's painting techniques can't be easy. Please show some respect and compassion.

Custom Picture Framing
• Original Limited Edition Graphics • Posters • Prints

**Naked
Wall**

**10% OFF
PBWS**

ART GALLERIES

Palm Square Plaza
1217 S. Powerline Rd.
Pompano Beach, FL 33069
(954) 971-6710

Shoppes of Oriole
7431-57 W. Atlantic Ave.
Delray Beach, FL 33446
(561) 498-7773

Palm Beach Watercolor Society

MEMBER NEWS



WELCOME NEW MEMBERS!

Katonah, Karen • Ana Tamayo

Karen H. Salup was interviewed as a "Rising Star" by Voyage MIA Magazine | Miami City Guide. The link to the interview: <https://voyagemia.com/interview/rising-stars-meet-karen-h-salup/>

Share your news! Send an e-mail to Lee Krull at idesign@gate.net for publication in the next newsletter!

Carol Z. Brody NWS, TWSA was recently awarded an Excellence Award in the 2024 Qingdao International Watercolor Exhibition in Qingdao, China! Her painting shown below is entitled, "Party Papers, Ribbons and Confetti VIII".



The **California Watercolor Association** has kindly asked that we share information about their **55th International Exhibition** to our membership. This is an in-person exhibit at the Piedmont Center for the Arts in the SF Bay Area, February 15 - March 23, 2025 with \$15,000 in prizes and cash awards. This exhibit is open to all artists, and membership to CWA is **not required**.

The prospectus can be found here: <https://bit.ly/intlexhibit>

Entry Period: July 1 - September 15, 2024.



DONATIONS

PBWS accepts donations to raise money for our Education and Scholarship Funds.

THANK YOU!

Susan Hess, Adeline Weiner, Maryann Hoskins, Fran McKinley, Elizabeth Keith, Ellen Altman, Carol Z. Brody, Janet Davis, Paula Epstein, Kathy Genco, Beverly Granath, Christine Heidisch, Lynn Holland, Darrell Jacob, Beverly Jacobson, Caryn Kabat, Gloria Kasper, Lynne Koenigsberg, Liane Kravet, Hali Layton, Marilyn Liedman, Elaine Litvak, Anita Lovitt, Mary Martinez, Anthony Mazzo, Gail Michaelsen, Sandra Newman, Sheila Patterson, Susan Pecker, Ann Piekarz, Martha Prado, Cate Pratt, Norman Price, Camille Rosano, Pauline Runkle, Karen Salup, LuAnn Sampson, Joan Schultz, Judy Shneyer, Sonja Shuford, Miriam Sivak, Sharon Sponder, Karen Thornton, Harriet Waldman, Adrienne Walker, Beverly Walzer, Helene White, Gloria Young, Maryanne Driscoll, Thomas Rebek, Jeff Epstein, Patsy Heller, Karen and Ken Scott, Jan and Jane Breyer, Mac Johnson, Joan Houghton Theall, Century Village Deerfield Beach group

Art and Frame Galerie

2300 N. Dixie Hwy.
Boca Raton, Florida 33431
561-362-5450
Todd Skrecz

**20% discount on custom framing
for Palm Beach Watercolor Society
members**

Ask the WATERCOLOR DOCTOR

by Carol Z. Brody NWS, TWSA
czbrody@carolzbrody.com
www.carolzbrody.com

QUESTION: How important is it for my paintings to have a center of interest? Given its name, should it be in the center of the painting?

ANSWER: When we look at a painting, what do we look for? What is it in a work of art that attracts our interest and holds it? Elements which I consider important are interesting use of color and texture or pattern, and a compelling subject matter, which could range from something figurative to abstract shapes and marks. But these by themselves are not enough to make a successful work. They can't hold the viewer's attention for long if there isn't a focal point—AKA center of interest. As we look at a painting, we may enjoy various portions of it, and our eyes generally will move around the piece as we look at it. But we need to finally come to rest in one area, as if this is where we were meant to end up. In a recent demo by Tom Lynch for the PBWS, he asked if we knew what to call a painting which has no center of interest. According to Tom, "It's called wallpaper!"

How can you determine where your center of interest should go? Despite its name, the center of interest should not be in the center of the painting! If you can, try to imagine that your painting has lines which divide it into thirds, both horizontally and vertically. You can even lightly draw these onto your work in pencil so that you understand the idea. The ideal placement for the focal point is where these horizontal and vertical lines intersect. This artistic concept is known as the "rule of thirds," and it is useful for composing good photographs as well as paintings. My preference is often to locate the focal point in one of the two upper intersections, which I feel gives a sense of lightness to the painting. However, if you have a very big sky or a landscape which has lots of trees in the upper section, or something similar, locating your focal point in one of the lower intersections is just as effective.

Here are some DO's and DONT's for you to keep in mind when you are composing your painting. Don't put your focal point at an edge. Don't put your most exciting color at an edge, which I have seen many beginning students do. Don't have two or more equally compelling focal points, each fighting for dominance. Don't have strong lines or roads or shapes leading you out of the painting, away from the focal point. Instead, do have your greatest value contrast, most interesting marks, greatest detail and most beautiful colors where you want your focal point to be. Do sometimes have a very large shape or some very small shapes where you want your focal point. And do have a line or road or a general movement of shapes through the painting, leading your eye to the focal point.

Now, with all that knowledge, are you ready to create wonderful works? I hope so!

Please keep sending your questions to me at czbrody@carolzbrody.com. I'd love to hear from you!





PALM BEACH WATERCOLOR SOCIETY

Membership Application and Renewal Form

*****ATTENTION, PLEASE READ CAREFULLY*****

Membership payment includes eligibility to participate in, shows, workshops, paint-in's, committees, and to serve on the PBWS Board. **Please answer YES in the appropriate box; Membership Renewal if you are a returning member OR New Membership if you are joining for the first time.** Annual dues are in effect from October 1st to September 30th.

Please complete the information below and submit this form with your payment.

Make check payable to: **Palm Beach Watercolor Society.**

Mail check to:

PBWS c/o Jimmy Walker

P.O. Box 18

Smallwood, NY 12778

Dues: Single Membership \$50.00 ____ Family Membership \$65.00 ____ Lifetime \$275.00 ____

The PBWS Newsletter is normally sent by e-mail. Annual charge for mailed Newsletter: \$10.00 ____

New Member

I am Renewing my Membership

Change of Address Change of Phone Change of E-mail

Name (Please Print): _____ Date: _____

Address: _____

City: _____ State: _____ Zip code: _____

Telephone: (home) _____ (cell) _____

E-MAIL: _____ Website: _____

PBWS operates on the basis of volunteers. Our members are encouraged to assist with various activities as well as serve on or chair committees.

I would like to help with (please check):

Communications Computer Exhibitions Historian Hospitality Mailings

Membership Newsletter Paint-In's Programs Publicity Receptions

Workshops PBWS Board Other _____

Total Payment: \$ _____ Check # _____

***Credit card payments www.palmbeachwatercolorssociety.com; go to Membership**
If you have any problems paying with credit card, please call Adrienne Walker 516-885-4199.

For further membership information, contact:

Carol Hirsch (646) 625-9785 or Lee Krull C (561)-767-6226 H (561)-357-4627

Palm Beach Watercolor Society Board Members

Adrienne Walker pbws2021@gmail.com	President / Workshop Director	(516) 885-4199 c
Lynne Koenigsberg jade11611@comcast.net	Vice President	(561) 926-3082 c
Jimmy Walker walkertrvl@aol.com	Treasurer	(561) 885-4199 c
Anita Lovitt lovittland@gmail.com	Recording Secretary/Paint Ins	(561) 706-3653 c
Beverly Granath bgranath@bellsouth.net	Corresponding Secretary	(561) 395-5937 c (561) 395-4416 h
Caryn Kabat carkab@aol.com	Education	(561) 523-9655 c (561) 733-0195 h
Karen H. Salup karensalup@gmail.com	Scholarships	(561) 715-2758 c
Carol Hirsch caroljhirsch@gmail.com	Membership Chair	(646) 625-9785 c
Lee Krull idesign@gate.net	Newsletter/Membership	(561) 767-6226 c (561) 357-4627 h
Susan Pecker wuzcold@aol.com	Workshops	(561) 445-3440 c (561) 738-0170 h
Paula Epstein paintingwpaula@bellsouth.net	Workshops	(561) 455-6049 c (561) 499-0304 h
Karen Thornton karenthornton860@gmail.com	Workshops	(561) 789-2664 c

Palm Beach Watercolor Society Committee Members

Camille Rosano newcr13@aol.com	Shows Chair	(914) 260-8690 c
Sonja Shuford sonja5880@gmail.com	Committee Member	(561) 344-9174 c
Marilyn Young marilynyoungartwork@gmail.com	Committee Member	(954) 461-8057 c
Mary Martinez artsymary@gmail.com	Paint-Ins	(561) 704-0902 c (561) 736-7619 h
Lynn Holland laplume366@gmail.com	Contributing Member	(561) 638-9927 h
Carol Z. Brody czbrody@carolzbrody.com	Contributing Member	
Beverly Walzer bevwalz007@gmail.com	Paint-Ins	(561) 866-8666 c
Liane Kravet kravet.4210@gmail.com	Paint-Ins	(954) 249-9494 c